



SANTA ROSA HIGH SCHOOL FOUNDATION NEWSLETTER

Spring, 2016

Vol. 27

Issue 3

The mission of the Santa Rosa High School Foundation is to serve as a charitable organization to unite Santa Rosa High School alumni, parents, faculty, staff and interested community members in order to provide financial support for SRHS programs and students, and to preserve and document the history and traditions of SRHS.

THE EARLY DAYS WHEN SANTA ROSA FOOTBALL WAS WILD

By Mike Daniels '59

[Editor's Note. We're very happy to include this shamelessly funny contribution from former SRHS Foundation newsletter editor Mike Daniels. It concerns a time when an ill-conceived high school prank wasn't immediately labeled an act of terrorism. Don Cambou, the current editor.]

The first Santa Rosa High football game was played in 1892. Akin to rugby with lots of pushing and massive player shifts, the game was far different from today's specialized play. That first team was coached by principal Clement Young, himself an 1886 SRHS graduate. He was chosen--or maybe volunteered--because he had actually seen football played while in the East. After a number of delays—probably because of the steep learning curve the players new to the game faced—a contest was played with Petaluma High School. Santa Rosa lost, 24-0, but an athletic rivalry was born. It became the strongest rivalry in Northern California, both in and out of sports. The football contest became the “Big Game.”

Young left Santa Rosa after just one year and went into real estate and politics. In the 1930s, he was

elected governor of California. Football at SRHS was on hiatus.

In 1917 Victor Hodge, just out of the Army, came to Santa Rosa as football coach. After struggling to find players and teach them football, Hodge fielded a team in 1919. It lost every game. But in 1920 with Ernie Nevers leading the way in running, kicking, passing, tackling and everything else, Santa Rosa won the championship of the northwest section of the California Interscholastic League, the statewide umbrella for high school athletics.

Nevers, of course, went on to great fame at Stanford University and in the early days of the National Football League. Among his many accomplishments, he is a charter member of the NFL Hall of Fame in Canton, Ohio.

One of the oldest in California, the Petaluma vs. Santa Rosa rivalry was the logical result of the business and political roots of the two cities. Developed by Yankee businessmen, Petaluma in the nineteenth century was larger than Santa Rosa and its river controlled most of Sonoma County's *Continued on page 4*

HOW THE FOUNDATION SPENDS YOUR MONEY

By Don Cambou '64

5:45 am. It's dark outside. But I'm on my way to Adel's on College Avenue for the March meeting of the Panther Project Fund (PPF). I arrive before 6:30 to find the private dining room a bustle of activity. Tony Negri passes out packets of “Requests for Funding” with a “PPF Grant Worksheet” cover page. Teachers wait outside for their chance to request Foundation money for their classes or special projects. I'm already impressed by the level of organization. In the next few minutes, the table fills with 8 PPF committee members and SRHS Principal Brad Coscarelli. At the far end of the table is an empty seat. This is a scene that repeats itself the first Friday of every month during the school year.

Here's how it works:

The teachers or coaches waiting patiently outside the dining room have each filled out a “Request for Funding” that includes the exact items or activities they seek. Each request is to the penny. They're called into the dining room, sit in that empty chair, and make a verbal appeal to the Committee. Every *Continued on page 5*

PRESIDENT'S MESSAGE

As the Foundation moves into the Spring 2016 activities I am amazed at how energetic the various Board of Directors members and committees have been.

First, the Polenta Feed Committee already has been working feverishly to prepare for SRHS's greatest "All Class Reunion." The committee is extremely well organized and has a tremendous working relationship. The leadership of the co-chairpersons, Paulette Gomes, JoAnn MacDonald and Donna Dennes Peterson, are the primary reason for the Polenta Feed being a fantastic event.

One of the initial Polenta Feed problems arose when the prior insurance carrier informed us that it was unable to provide liability insurance for the Foundation. This had an immediate financial impact, which Mary Beseda took charge of by researching insurance carriers. Her objective was to find a single carrier that would provide liability insurance and liquor liability coverage. She succeeded. However, the prior insurance had an annual cost of \$250, while the new coverage is about 18 times higher. The additional amount of the insurance was an unexpected cost of doing business. However the fee for the Polenta Feed remains at \$35 per person.

As of this writing the likelihood is that the Polenta Feed will be sold out (again). I'm sure if we had a larger venue we would be selling more tickets. But to be sold out to the maximum capacity of 650 graduates, administrators, staff and friends of SRHS is amazing. Since the first Polenta Feed held in 1997 this event has become one of the most anticipated and enjoyable fund raising events of the year.

The Investment Committee and Finance Committee together develop and recommend to the BOD the Foundation's annual budget early in the fiscal year. Because the markets have negatively impacted the Foundation's investment portfolio for several months, the committees have recommend to the BOD to reduce the amounts allocated for spending. This reduction in spending has had an impact in the amount allocated for scholarships and the Panther Project Fund (PPF).

The scholarship committee chairperson, Nadine Smedshammer, has been coordinating with SRHS's administration and counselors regarding the reduction in the amount of scholarship monies. The decision is to maintain



the number of scholarships, but to reduce the amount of each. The resulting overall amount issued for scholarships is budgeted at over \$71,000. The scholarships will be awarded in May of this year.

The PPF Committee, chaired by Tony Negri, meets every Friday morning prior to the Tuesday BOD meeting. The committee has maintained its oversight of the amounts allocated to the various requests. The current year to date amount provided through the PPF program is over \$68,000.

Overall I am very proud of the Foundation and its BOD. They have demonstrated an extremely positive attitude. The BOD demonstrate in many ways that they are focused on providing SRHS's students, staff and administration a great experience while at SRHS.

I encourage you to maintain your membership (or to become a member). Perhaps you'll become a life member, a One Thousand Panther contributor, a purchaser of seat plaques. Perhaps you'll contribute to the Foundation in other ways. The funding from these various sources augment the ability of the Foundation to give back to SRHS. As you will see in this issue there is a membership opportunity to receive either a Foundation PANDY BASEBALL CAP or SHOPPING BAG. It's called The Big Cat Club.

In a final note I am encouraging you to get involved with the Foundation activities. We have vacancies to be filled on the BOD or you can be involved as an associate to the board. Your involvement will maintain the future of the Foundation and help the students at SRHS. You may contact us through our web site at www.srhfsf.org.

We look forward to seeing you at the greatest "All Class Reunion" Polenta Feed.

"Once a Panther Always a Panther"

Respectfully,
Jim Ward '62
President 2014-2016

SRHS Foundation Directors

Jim Ward '62, President	Stephen Olsen '61
Tony Negri, Friend, V President	Dick Owens '72
Mary Schaefer '76, Treasurer	Carol Laabs Patterson '55
Mary Orsborn Beseda '74, Secretary	Doug Pavese '58 *
Sue Ellen Bolt, Friend	Donna Dennes Peterson '67 *
Susan Burch, Friend	Nadine Wiggins Smedshammer '59
Don Cambou '64	Sylvia Zane Strong '62
Benjamin F. Catching, Friend	Mark A. Walswick, '74
Paulette Guaspari Gomes '68	Ilona Mayer Williams '64
Phil Hulen '58	
JoAnn Hembree MacDonald '56	* Founding Director
Matt Metzger '91	

Dear SRHS Foundation,

On behalf of the Bribescas Family, please accept our heartfelt thanks for your help and support regarding the death of my brother, Dan. Specifically, the immediate actions taken by the Board to assure our family that Dan's memorial service could take place at our beautiful SRHS auditorium. You made it all possible, and as alums, we are forever grateful.

On November 1, 2015, the SRHS auditorium was filled with several generations of Panthers. It was an uplifting sight and wonderful to behold at a most difficult time.

I want the SRHS family to know that Danny's daughter, Lindsay has been strengthened by the love and support provided by you.

Lindsay (class of 2015) is a third generation Panther... She earned all "A"s in her first quarter at UCLA...

As I write, our Panther Boys' soccer team is in first place. I'd like to think Dan is proud and beaming for Coach Garcia's Boys.

It's a special gift to be part of the SRHS legacy.

Appreciatively,

John Bribescas – SRHS class of 1966
SRHS English Dept. 1984 -2009

My brother, Bob Brown ('64), occasionally sends me his SRHS Foundation Newsletter after he has read it to death. The current printing, all bent and crinkled arrived a couple of days ago.

High school wasn't about specific teachers, sports, or school government, but rather about a climate of acceptance, an opportunity to experience different ideas with electives, a remembrance of a time of encouragement, achievement, and a place that inspired individuality and creativity. Of course, I remember cheering my head off for the football and basketball teams because I attended all as a band member...

What interests me is to know what graduates of SRHS have contributed to their towns, their families, to their government, to their corporations, and to the world. I dare say that might interest others too. Thanks for the chance to speak.

In fond remembrance of SRHS,

Mary Brown, ('57) AA, BA, MA, EdD

GIVING THROUGH THE SRHS FOUNDATION

- 1.) Establish an Unrestricted Fund (in your name or anonymously) with a gift of \$10,000 or more
- 2.) Establish a Restricted Scholarship Fund with a gift of \$10,000 or more
- 3.) Include a bequest or Planned Gift in your estate plan
- 4.) An Unrestricted Cash Gift of any amount that the Foundation Board will direct to a current need program

A wide variety of gifts are accepted including:

- Cash
- Publicly traded securities
- Remainder of a Charitable Trust
- IRAs or life insurance policies with the Foundation as beneficiary

The Santa Rosa High School Foundation is organized as a 501c3 non-profit corporation. For further information, please contact [SRHS Foundation, P.O.Box 11006 Santa Rosa, CA 95406](#), e-mail donations@srhsf.org or call the [Pandy Line 707-571-7747](#)

Please always speak with your tax advisor when considering making a charitable contribution.

NEWSLETTER SUBMISSION GUIDELINES

Article submissions are invited, as are story ideas. Please limit articles to 500 words and letters to 150 words. Please limit Panther Patter submissions to 150 words. All submissions are subject to editing and become the property of the Foundation.

Please submit articles and letters in unformatted text. Microsoft Word is preferred.

Please submit photos and graphics separately from text, but do provide identity of subjects and other relevant material.

Email submissions to doncambou1@gmail.com. Or mail hard copies to PO Box 11006, Santa Rosa, CA 95406-1006.

Football was Wild...continued from page 1
trade. Its high school held classes in 1874, one year before Santa Rosa. Its sympathies during the Civil War lay with the North and it voted Republican. Santa Rosa, on the other hand, was settled by Southerners (Missouri, Kentucky, Tennessee) and was smaller and more agricultural. Its Civil War leanings were with the South, and its politics were Democrat.

In the 1930s Petaluma installed a large paper-mache chicken and nest at the south end of town to promote its claim as the “Egg Basket of the World.” The chicken a number of times suffered attacks—orange and black paint—but it continued to lay there, some years molested and some years not. But the Press Democrat reported in 1938 that the chicken and its nest “are no more.” Dynamite had blown it into smithereens. Allegedly, some Santa Rosa High School “farm boys” were responsible.

The event that triggered a student riot on Petaluma streets after a Santa Rosa football win in 1943 started innocently enough. In one version, a Petaluma student yelled to Santa Rosa students in a car something like, “We’ll beat you next year.” A passenger in the car responded by calling him a “4-Fer—“or, perhaps, something more colorful. We’ll never know what exactly, but 4-Fer was a harsh term in those days of WW II.

At any rate, additional verbal exchanges escalated and tempers flared. The Petaluma student jumped on the running board of the now moving car and threw a punch.

The driver lost control, sideswiped a parked car and ran into a store window.

More punches were thrown, a crowd of teenage boys and girls gathered and the fighting spread. It grew and grew. The police arrived but couldn’t gain control. So they called the fire department. Two trucks arrived, its hoses and streams of water finally quelling the rioters. The Petaluma newspaper report of the melee quoted one of the fire fighters as saying he’d “rather fight fires all day long than face a mob of screaming girls.”

Sodden and dispirited, the Santa Rosa students discovered the roter buses had left for home. They were forced into a long trek northward on foot. It’s said that Panther football coach Jimmy Underhill made many trips back and forth that long night, giving students a ride in the bed of his pickup truck.

Ellen Trueblood, Petaluma principal, said that the two schools should no longer play each other. But Santa Rosa principal T.H. Battelle countered with “Boys will be boys.” And girls, girls, evidently.

Games, pranks and other events between the high schools continued of course, but nothing compared to the riot in 1943.

Then, in the fall of 1958, it all came to an end. Santa Rosa built a new high school, Montgomery High, and the spirit of rivalry remained in the city limits for the students of SRHS.



MORE WILD SRHS FOOTBALL

Apparently, early SRHS football teams were just as wild as their fans. Take the 1925 “game” that saw the Panthers mercilessly rip the stuffing out of poor little St. Helena. SRHS set a national scoring record that has yet to be eclipsed. The orange and black gridders handed St. Helena High a resounding defeat of 141 to 0! According to the ’25 Echo, SRHS scored on every third play. That season the Panthers had a 5 win, 1 loss and 1 tie record. Napa High beat SRHS by the narrow score of 7-6, and Vallejo High managed a tie. Pretty heady stuff.

That ’25 team was coached by former Olympic athlete Morris Kirksey, who won two gold medals and a silver

in the 1920 games in Belgium. He anchored the USA’s winning 4x100 meter relay, played on the champion rugby team and was second in the 100 meter dash. A Stanford graduate, he left SRHS in the early ‘30s after a tiff with Principal Gardiner Spring (Well, Kirksey threw a punch at his boss and was accordingly relieved of his duties.). He then earned a degree from St. Louis Medical College and spent the remainder of his working life as staff psychiatrist at San Quentin and Folsom State Prisons. He passed away in San Mateo in 1981.

presentation is thorough, efficient, and friendly. The Committee asks any applicable questions. It's a revolving door – one teacher out, another in. After all the morning's requests have been made, the committee members order breakfast, and begin to discuss each request separately. They eat, sip coffee or tea, and make their decisions.



Amber Oden, Girls Volleyball coach, presents request

The money comes from the Foundation's unrestricted fund. That means the Foundation can use the money to benefit SRHS in any way it sees fit. It's money that comes from your memberships and special contributions, the annual Polenta Feed, and the annual Golf Tournament.

The March teachers and coaches do well. Every request from every attending teacher or coach is funded in total.

The Music department gets an Oboe, Ceramics Fine Arts gets twenty sculpture turn tables, Girls Volleyball gets new uniforms, World Language gets money for a field trip to North Beach for Italian students -- you get the picture.

The PPF has pledged \$8,501 dollars on this March Friday alone. And the Committee members have received a special treat: Nine members of the National Honor Society showed up to personally thank the Foundation for supporting their yearly "Day of Tolerance"

The \$8,501 the PPF pledged at this meeting brings its total this school year to \$68,456. For the last several years, the PPF has averaged about \$90,000 each school year. Since its inception in 1989, when the Foundation funded a total of \$700, the PPF has awarded close to two MILLION dollars in SRHS grants. Much of it for items like those requested at this meeting. Some for special, "big ticket" projects. Consider: The Foundation paid \$36,000 for the SRHS sign at the front of the school, and an additional \$25,000 for the electronic sign nearby. It also provided SRHS with campus wide wifi. The Foundation has been a major contributor to the lights, signs, and water fountains at refurbished Nevers Field. It's also been a major contributor to the creation of the Ag Barn, Green House, and Vet Tech Building remodel. Toss in over 70 computers, 50 digital projectors, and 50 high end calculators. Then add in the huge number of grants for field trips, sports uniforms, science lab materials, ArtQuest materials, etc. That's where your money goes.

By 8 am on this March Friday morning, it's all over. Each of the Committee members pays his or her own breakfast check, and heads out into the cloud filtered sunlight.

PANDY GETS FRESH

by Donna Dennes Peterson '67

"Who was Pandy?" It was always a top secret to most SRHS classmates from the 1950's through the 1980's. Many still don't know who was dressed as the Pandy mascot during their years at SRHS! Age has taken a toll on all of us old-timers, as well as that crowd pleasing, playful Pandy.

But at the class of 1965's 50th Reunion last July, Tom McIntyre stepped up to volunteer to revitalize our timeworn Pandy. Tom, a graduate of San Jose State, the California College of Arts & Crafts, and has a degree in Dramatic Art from U.C. Davis, has had a career as a commercial artist and a visual designer. He also is a commercial sign maker. And as a pastime, Tom is a jazz musician playing gigs for parties and needy causes.

Tom enlisted the help of Greg Duncan of Duncan Design, Inc. in Santa Rosa to spearhead the reinforcement and fabrication of a Pandy head make-over. Greg was the Scenic Designer for the College of Marin Drama Department, as well as a creative genius for the Flower Show at the Sonoma County Fair.



The restored Pandy with Tom McIntyre

So, next time you're at a class reunion or at the Rose Parade, watch out for our rejuvenated Pandy! And remember, "Once A Panther, Always A Panther"!

BECOME A BIG CAT

The SRHS Foundation has a new and exciting way to be a member, help the school, AND own the newest and coolest swag.

The Big Cat Club. Up your membership fee one time, for one year to \$75 and you'll receive your newsletter AND this sturdy, PANDY emblazoned canvas SHOPPING BAG. We guarantee that the extra money the Foundation receives goes directly to helping SRHS and its students.



PANDY BASEBALL CAP. You can wear it proudly, knowing how much you've helped the school and its students.



So if you want to do more for SRHS and its students, be a BIG CAT. Just fill out the new membership form below. If you want to UPGRADE your current membership to BIG CAT status, email Susan Burch at sburch@sbcglobal.net to make arrangements.

PLEASE NOTE: This form is for Big Cat memberships only. Our standard membership form is on the last page of this newsletter.

Up your membership one time, for one year to \$100 and receive the newsletter AND this cotton embroidered

Name (please print)	Maiden Name	Email Address
Mailing Address	Phone	
<input type="checkbox"/> Membership with bonus baseball cap, \$100	<input type="checkbox"/> Membership with bonus shopping bag, \$75	
		TOTAL _____
Make Checks payable to SRHS Foundation and note BIG CAT on the check –OR–		
Charge my <input type="checkbox"/> Visa <input type="checkbox"/> Master Card <input type="checkbox"/> Discover Card		
Card Number _____	Exp Date _____	3 Digit Security _____
Name on Card	Signature	

CONTRIBUTIONS & MEMBERSHIP NEWS

by Susan Burch, Membership Chairperson
January, February and March 2016

I am pleased to report that we have welcomed 8 new Foundation members and 98 renewals. Contributions and memorial gifts this period total \$6,976.75. This is money that goes right back to the students, one way or another, and opportunities they may not have otherwise.

The following members and friends contributed additional funds over and above their membership fees:

- | | | |
|--------------------------|----------------------------------|-----------------------------|
| Peggy Call, '41 | Richard Heidebrink, '64 | Cynthia Norman, '57 |
| Richard Azevedo, '44 | Alicia Hodenfield, '85 | Steve Orsborn, '68 |
| Avis Claeys, Friend | Margaret Hougen, '41 | Allan Pangborn, '67 |
| Class of 1960 | James Hurley, '58 | Ann Poulson, '50 |
| Wes & Carol Daniels, '85 | William & Joan Mills, '49 | Gwen Rigby, '64 |
| Victoria Fleming, '63 | Lucille Moholt-Siebert, '68 | Betty Seacord, Friend |
| Coy Gore, '55 | Morgan Stanley, Financial Entity | Jim & Dana Simonds, Parents |

Mark Sloan & Elizabeth Chicoine, Suzanne Smith, '65
Parents Sandra Spencer, '54

Dennis Tyler, '53
Ron Uchytel, '53

WELCOME ABOARD BIG CAT CLUB MEMBERS!

Meet the new trendsetters:

Dana May Dibble, '59

Betty Seacord, Friend

Clarence Tauzer, '44

LIFETIME MEMBERS

Oren & Nadine Smedshammer, '59

If you are interested in becoming a lifetime member, please see the form available in this newsletter or go on-line to www.srhsf.org to join or to make contributions. Or, contact me, Susan Burch at sburch@sbcglobal.net. The Santa Rosa High School Foundation will continue to grow with your help and our students will continue to flourish, while encouraging a commitment to education. Please talk to your family and friends about becoming members of the Foundation. Any questions or concerns should be directed to me, Susan Burch at [707-484-5234](tel:707-484-5234)

MEMORIAL & SPECIAL CONTRIBUTIONS

You may send the Foundation a contribution in the name of a deceased Panther, or in the name of a specific living person or scholarship.

The Bill Boriolo Memorial

Clarence Tauzer, '44

The Phil Box Memorial

A.M. Venturini, '58

The Ray Burnside Memorial

Oren & Nadine Smedshammer, '59

The Jessica/Marsha Carney Scholarship Memorial

Avis Claeys, Friend

The Estelle De Chant Memorial

Jean De Chant Tosten, '58

The Spirito "Petie" Falco Memorial

Beverly Alexander, '45

The Julie Huntington Gleason Memorial

Christine Huntington Surlow, '69

The Keith Haskins Memorial

Carolee Breazeale '56
James Laier, '58

The Jim Miller Memorial

Robert Tuttle, '40
Caroline Ramberg '40

The Leon Lenny Memorial

Carol Guanella, '56

The Margi Imrie Lorey Memorial

Don Cambou, '64
Sandy Ahl Harrison, '64
Ilona Mayer Williams, '64

The Sue Powell Memorial

Oren & Nadine Smedshammer, '59

The Marv Soiland Memorial

Clarence Tauzer, '44
Mary Testorelli, 47

The Laurie Villareal Memorial

Oren & Nadine Smedshammer, '59

NOTE: If you wish to have your donation acknowledged to the family of the memorial honoree, please include an address for that purpose.

In Memoriam

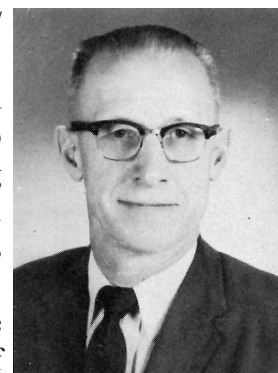
George Connor	1936	William Harrison Lane	1953	Christine Lane Biggers	1967
Angelina Ciaravelli Curtaz	1937	James Abelman	1954	Kathy Watson Mangiantini	1967
Paul Wright	1940	Linda Malaspina Heitmeyer	1955	David Penry	1969
Marv Soiland	1944	Lynette Mallory	1956	Zane Walter Cruz Templin	2010
Margaret (Peggy) Mast Rhoda	1946	Jerry Jon Sundahl	1957	William Boriolo	N/A
Edythe Baker	1949	Don Anderson	1959	Paul Pasero	N/A
James Schoenthal	1949	Dan Hicks	1959	Robert Lee Urmann	N/A
Herman Baggenstos	1951	Margi Imrie	1964		
Darlyn Bath Watt	1952	Lawrence "Larry" Olsen	1965		

TED LIEFRINCK'S "FULL CIRCLE"

by Patsy Downs '49

Ted Liefrinck was my dad and taught Biology at Santa Rosa High from 1948 through the 1960's. I am not certain when he retired. Ted went "full circle" at SRHS. He emigrated with his family from the Dutch East Indies (now Indonesia) when he was 12. After learning English and attending elementary school, he attended SRHS. Upon graduating, he attended U.C. Davis and received his Bachelor's degree. Ted then began a teaching/coaching career in Tomales, CA. After six years in Tomales, he accepted the position of principal in Potter Valley, CA in 1936. Potter Valley High School was small. Thus, in addition to principal duties, he taught classes and coached. In the summers, he worked in the Masters program and received his Master's degree from U.C. Berkeley. In

1945 he was hired as principal/superintendent at Mendocino, CA. A return to Santa Rosa beckoned him and in 1948 he returned to SRHS to accept a position teaching Biology, completing the "full circle." In retirement, Ted and his wife, Olive, lived in Auburn, CA. At the age of 95, Ted died. Olive died one month later at the age of 92.



Ted Liefrinck

Both my sister, Norma, and I attended SRHS, graduating in 1950 and 1949, respectively.

ANOTHER SERENDIPITOUS DISCOVERY

by Mike Daniels, '59

Retired SRHS Principal Tony Negri seems to have a penchant for being in the right place at the right time—at least when it comes to collecting significant SRHS memorabilia from neighbors.

A few years ago, while driving his black sedan with the orange flames--you know the one--he was hailed by a neighbor who gave him an ancient SRHS leather football helmet and his wife's 1953 cheerleader sweater.

Much more recently, a neighbor from Tony's former neighborhood, gifted him with two pieces of souvenir china that celebrate the first SRHS campus, a gift that adds to the role of SRHS in Santa Rosa history.

Printed on the bottom of the china is "Enterprise Coffee and Candy Company, Santa Rosa Cal." as is "Wheelock" and "Dresden, Germany." The Enterprise company was located at 401 Fourth Street (where CitiBank stands today) and operated in Santa Rosa into the 20th century. Since before the Civil War, Wheelock imported and sold fine china in Wisconsin and was astute enough to capitalize on the fad of collecting souvenir china that was becoming widespread in the later 19th century. Wheelock began to import souvenir china made in Dresden, Germany and sold it in the U.S., Canada and Mexico.

SRHS had gained its own campus in 1895, moving from the crowded Fourth Street School to Humboldt Street. The handsome, three-story school was Santa Rosa's jewel and quickly became the center of Santa Rosa's social life as students entertained the community with musical and drama productions and citizens flocked to its athletic events.

So, because the collection fad and the opening of the popular SRHS campus coincided, it is only logical to assume that Enterprise ordered souvenir china from the



Wheelock company to celebrate the new campus.

Kay Volioa and her late husband Bob, donors of the china, moved to Santa Rosa in 1975 and became interested in local history, so much so that they authored *Santa Rosa, California in Vintage Postcards* and began collecting local artifacts. Their book is still available at Barnes and Noble and Copperfield's as well as the California Welcome Center in Railroad Square. Among other historical activities, Kay remains heavily involved with the Lamplight Tours in the Santa Rosa Rural Cemetery.

Their collecting of Santa Rosa artifacts started about the time their two children graduated from SRHS—David in 1989 and Sara in 1993. Somewhere along the line, Kay can't remember where, they purchased the dish and the vase. Ultimately, probably after working at Whistlestop Antiques twelve years or so, they found a "passion to see that the 'stuff' they collected would go to the place where it belongs" and donated items to the Luther Burbank Home and Gardens and the Sonoma County Museum among others. And so, the china is now at SRHS where it is housed in the campus museum and adds its shine to this jewel of a high school.

WHEN “THE BOYS” ROCKED CHEERLEADING

by Don Cambou '64

By the middle of 1963, the changes had begun. We had been scarred by the Cuban Missile Crisis of October, 1962. In months, our golden boy President Kennedy would be assassinated. The number of military advisors in faraway Viet Nam would soon reach 15,000. And the Beatles were coming to America.

Change was coming to SRHS, too. Some of it in the unconventional form of a cheerleading team. They called themselves “The Boys.”



Ken Plante ('64) got the idea when he attended a cheerleading camp. The instructor declared that the future of cheerleading was in gymnastics. Plante rushed back to his gymnastics class, taught by math instructor and track coach Ken Goetzel, and started recruiting. He soon enlisted fellow gymnasts Rick Niles ('64), Randy Wallstrum ('64), and Jim Bowron ('64). Bowron, who would become Head Cheerleader, recalls “I got into it because then I could wear shorts to school.”

For years, SRHS cheerleading squads consisted of a mix of a couple of cute girls and boys. They would jump, they would clap, they would chop (Give ‘em the axe the axe the axe,) but they didn’t do flips. At that time, cheerleaders and song leaders were elected by the student body after

demonstrating their wares at a general assembly. The Boys, “If You Want Noise, Elect The Boys,” took the stage. They led cheers with a healthy dose of front flips, back handsprings, assisted back flips, and round offs into back flips. The assembled crowd went wild. Backstage, David Samuels ('64) remembers he and his cheerleading partner Sandy Ahl Harrison ('64) exchanging that “We’re in trouble” look. Any other year, they would have won. But this was clearly The Boys’ time. Now, Rick Niles claims, “The stuff we were doing then is baby stuff for top cheerleaders today.” But for the next school year, SRHS rallied behind the New, and joyfully raised its collective voice with the most dynamic cheerleading squad in the North Bay.

SANTA ROSA HIGH SCHOOL FOUNDATION

21ST ANNUAL GOLF TOURNAMENT

SAVE THE DATE

Friday, September 9, 2016
Oakmont West Golf Course
Check-In begins at 11:15 AM
Shotgun Start 12:45 PM



- Golf Cart, Range Balls, Lunch with drinks
- 18 Holes of Golf – 4 Person Scramble (Men’s & Co-ed Flights)
- Dinner and Auction Following in the Quail Inn, Guests Welcome

Tee Prizes ★ Raffle Prizes ★ Silent/Live Auction

- Top Foursome Awards – Men’s and Co-ed Flights
- Longest Drive – Men, Women and Seniors (65 and over)
- Closest to Pin – Men and Women
- Free Putting Contest – 11:30 to 12:30

For a registration form or information about Sponsorship opportunities:

Call our Pandy Line at [707-571-7747](tel:707-571-7747) or email golf@srhsf.org

You may also visit the SRHS Foundation Website at www.srhsf.org

All Proceeds Benefit SRHS Sports and Academic Programs



Santa Rosa High School Foundation

“Once A Panther, Always A Panther”

ONE THOUSAND PANTHERS

Thank you - ONE THOUSAND PANTHERS - for your generous support!
Currently 182 Donors (many with multiple donations) totaling over \$235,000
2015 - 16 Donations To Date

JOHN AGUILERA 1955	BOB 1961 & AUDREY MUELRATH
TODD 1973 & MARY ORSBORN 1974 BESEDA	GARY RASCHE *****
JOHN BRIBIESCAS 1966 IN MEMORY OF DAN BRIBIESCAS SRHS 1977	PATRICIA CHALMERS SCOTT 1950
BARNEY (1969) & MARY DAVIDGE	TED SMITH 1955 **
LISA KELLER 1985 EVICH & MARK EVICH - PARENTS	VIRGINIA GROSSI TEMPLETON *
OF GRADS 2018 & 2021	ROBERT (BOB) WATT 1950 IN MEMORY
WILLIAM 1969 & CYNTHIA PORTER 1970 GALLAHER	OF DARLYN JUNE BATH WATT 1952
CATHY KRAUSE GOBBI 1955 *	LARRY WEESE *****
JAY E. 1992 & REBECCA GOTTLIEB	DONNA PANIZZERA WOJTKOWSKI 1959
JIM 1961 & DIANE GRACE	THE CLASS OF 1965
MICHAEL 1971 & KIM ROBERTS 1971 GUTZMAN *	PANDY FUND #1: CONNIE BARNETT 1953,
JEFFREY K. 1966 & DEBORAH HALLOCK IN MEMORY	KEVIN & JESSICA GILLIAN, PARENTS 2017 GRAD
OF MARY MADSEN HALLOCK	JOHN & CARLA GRUBSCHMIDT 1966 FOX
RUTH TAYLOR HAUSCHILDT 1958 HONORING 'MILLI' COMELLI *	JAMES SCHOENTHAL 1949
CARLA. 1975 & CHRYSTOL HAWKINS	JANET M. TOMPKINS 1949
DAVID A. & MICHELLE WELCH HEAD 1972	
ROBERT 1958 & MARCI TARLETON 1967 JENKINS*	
ALANA KELLY *****	

** indicates multiple donations*

Sometimes the stars just get in our eyes. Our sincere apologies for neglecting to add a star or two. We might overlook once in a while, but do catch up. Thank you, Alana Kelley, Gary Rasche and Larry Weese for being our star captains.

A Campaign in progress to enrich the SRHSF Endowment Fund by utilizing \$1,000 donations by 1000 Panther supporters to reach a goal of \$1 million.

The campaign began in 2011 and will continue until the goal is met.

JOIN US! We are making a difference.

Call the Pandy Line (707.571-7747) or visit us online at www.SRHSF.org for assistance.

Donation options are available.

Donations by cash, check, credit card are accepted from individuals and groups (pooled), pledges over 2, 4, and 5 years, employer matching funds, stocks and commodities.

QUICK AND EASY WAY TO CONTRIBUTE TO THE SANTA ROSA HIGH SCHOOL FOUNDATION

Sign up with eScrip and you can earn \$\$\$ for the Santa Rosa High School Foundation

Sign up online. It is quick and easy.

Go to www.escrip.com Click on “sign-up”

Follow the instructions to register your existing credit/debit cards



Community Cards

Are available for **Oliver’s, Molsberry’s Market, & Petaluma Market**

Pick up an eScrip Community Card at any one of these markets and register your card for automatic contributions to the Santa Rosa High School Foundation

GROUP ID NO. 500029689



By: Pandy

In April of 2013, **Kathryn Pearson Peyton '85**, a radiologist, presented her idea for “Mammosphere,” a cloud based repository of breast scans. Now, the platform holds the scans of over 25,000 women. And Mammosphere

just agreed to become a part of lifeIMAGE, a much, larger national network. Huge congrats to Dr. Kathryn for her very important work...

Steve Brown '67, a faculty economist with

the University of Nevada, Las Vegas, recently participated in research that helped determine U.S. government policy. He and his team provided economic analysis on the export of crude oil from the U.S. The analysis helped lead to the lifting of the export ban... The Press Democrat's “Biteclub” just described the house-smoked pastrami hash of local chef **Damon Gault '86** as “insanely good.” An electrician by trade, Damon takes over Sprenger's Tap Room on Sunday mornings to whip up breakfasts. Biteclub calls it a “Secret Santa Rosa Breakfast Spot.”... **Mary Brown '57** has had more than two-dozen occupations. To name a few: Legal Secretary, College Professor, Stock Broker, Stock Broker manager, Vice President of National Brokerage Firm in New York, and L. A.; owning her own sales management firm; running a software development firm; rehabbing houses; designing and building upscale homes. She also found time to raise her two children. She's currently a writer and artist... Psychiatrist **Chuck Garvey '64** graduated from the University of Wisconsin's Medical School in 1972, and completed his psychiatric residency in



Kathryn Pearson, Radiologist

1974. He practiced psychiatry in Wausau, WI for four decades, finally calling it quits in 2015 to enjoy his Three Gs: Grandchildren, Golf, and Gardening... SRHS swim star **Molly Hannis 2010** is one of the best breaststrokers in the world. She attended the University of Tennessee on a swimming scholarship and was an All American all four years there. She's training for the U.S. Olympic Qualifying

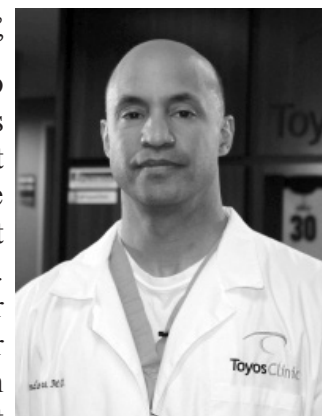
Meet that will take place in Omaha in early summer. From there, it's hopefully on to the Olympics. Go Molly!...

While at his 40th Reunion, **Carl Hawkins '75**, attended one of the Foundations' SRHS tours. He was excited to see the All American sports blankets, but disappointed that his name was missing. He offered to pay for the fix, but the Foundation beat him to it. Carl was an associate professor and department administrator at the Air Force Academy in Colorado... Ophthalmologist

Rolando Toyos '84, was recently named CEO of the Year by Inside Memphis Business magazine. His four Toyos Clinics often provide free treatment for patients who can't pay for it. Rolando is also the official ophthalmologist for the Memphis Grizzlies, Memphis Redbirds, and the St. Louis Cardinals' AAA baseball team. He's a mix of doctor, teacher, and community benefactor – a true Panther superstar... **Two 1966 grads** have found life after retirement in music. **Dave Hamilton** plays guitar and banjo. He's working on his third CD. **Jeff Hallock** plays the harmonica in different bands. His styles are blues, folk rock with country flavor, and bluegrass. Dave, Jeff, and another '66 grad, **Ken Stettler** may play a few tunes at their 50th Reunion in October.



Molly Hannis, All American Swimmer



Rolando Toyos, Ophthalmologist

HAVE YOU INCLUDED THE FOUNDATION IN YOUR ESTATE PLAN?



SRHS FOUNDATION

"Once a Panther, Always a Panther"

P.O. Box 11006

Santa Rosa, CA 95406-1006

Address service requested

NON PROFIT ORG.
U.S. POSTAGE
PAID
SANTA ROSA, CA
Permit No. 441

Time to renew?

Please check the label to see if it is
time for you to renew your
membership.

If you have already renewed
THANK YOU!

WAYS TO PARTICIPATE IN THE SANTA ROSA HIGH SCHOOL FOUNDATION

Name (please print) _____ Maiden Name _____ Spouse's Name _____

Address _____ City _____ State _____ Zip _____

Home Phone _____ Cell Phone _____ Email _____

Preferred Method to receive mail & Newsletter: Email U.S. Mail

SRHS Grad Year _____ Spouse SRHS Grad Year _____ SRHS Staff

SRHS Friend Parent/Grandparent (circle one): Grad Year of Student(s) _____

Membership Fee:

\$25 ~ 1 year \$45 ~ 2 years \$60 ~ 3 years \$500 ~ Lifetime

Annual Fund Campaign Contribution:

Please accept my gift of \$ _____ for: General unrestricted gift

Directed gift for _____ Gift in honor/memory of _____

(Department or Program) (circle one)

Join One Thousand Panthers:

\$1,000 or more \$500 ~ 2 years \$250 ~ 4 years \$200 ~ 5 years

Please acknowledge this donation in name of: _____

YOU MAY SEND CHECK (made payable to SRHS Foundation) for GRAND TOTAL OF \$ _____ OR

Charge my: Visa Master Card Discover Card # _____ Exp. _____ CVV _____

Name as printed on card: _____ Signature: _____

Please return this form to: Santa Rosa High School Foundation, P.O. Box 11006, Santa Rosa, CA 95406. If you prefer, you may complete your transaction online through our website: www.srhhsf.org. For more information, please call the Pandey Line at (707) 571-SRHS (7747) OR email us at: info@srhhsf.org. Tax ID #68-0195375 (for a gift of Marketable Securities, please contact us for more information.) Remember... **Once a Panther, Always a Panther**