



# SANTA ROSA HIGH SCHOOL FOUNDATION NEWSLETTER

Winter, 2011

Vol. 22

Issue 2

*The primary objectives and purposes of the Santa Rosa High School Foundation are to serve as a charitable organization to unite SRHS graduates, parents of current and past students, faculty, staff and interested community members; to preserve and document the history and traditions of SRHS; to provide financial support to the school; to promote community involvement*

## What makes an effective teacher? by Mike Daniels '59

The national media currently seems to search out public school teacher faults and to promote salvation for those faults in the form of accountability and merit pay.

Many proposed solutions focus first on defining what makes an effective classroom teacher. The solutions commonly concern measurement and reward--demonstrate student progress in subject matter and receive bonus money for the effort.

But isn't there something less tangible and perhaps more important that sets the effective teacher apart? According to a number of former SRHS students, it's a special quality they still vividly recall about certain teachers, and SRHS has enjoyed its share of such instructors.

A list has to begin with Frances O'Meara, who taught for 50 years. She began her career in a one-room schoolhouse in Cazadero and came to SRHS when it was located on Fourth Street. She witnessed the Humboldt Street campus burn to the ground in 1921. She retired from the Mendocino Avenue location in 1939. An English teacher for many years until credentialing requirements sent her to the study hall, her students loved and

respected her inspired teaching and her no-nonsense approach to discipline.

The student who paid great tribute to her several times after he left SRHS in 1907 was Robert Ripley of *Believe It or Not* fame. As a student, Ripley was far more interested in de-

veloping his drawing skills than writing about literature. O'Meara recognized his talent and encouraged it by allowing him to substitute art works that indicated he had read and understood the assignment.

Mildred Turner, who retired in 1958 after a long career teaching physical education and dance, worked hard to develop physical abilities in female students. In the 30s, for example, when posture was considered vital to a girl's long-term health, Turner sponsored the "Posture Trophy," annually awarded to the girl who was voted to have the best posture among the student body.

Joining the faculty when the Mendocino Avenue campus opened in 1925, Orb Fortier was charged with the responsibility of welding the student body together after it spent three years moving from building to building for instruction in downtown Santa Rosa after the '21 fire. How did he provide togetherness? By writing the words to the fight song (still sung today), by developing the Panther mascot, by encouraging a stronger form of student government and by changing the school colors. Along the way, he coached a number of NBL championship basketball teams and forged the value and utility of the Block S Club.

And let's not forget Lucy Spaulding in English, Wes Jamison in agriculture, Bill Larkin in wood shop, Joe Walter in music and Bert Bower, the attendance officer. All of these—and many more—strongly influenced students throughout their lengthy careers because of their commitment, high expectations, motivational skills, subject matter mastery and concern. Legions of alums still praise them.

But what of later teachers? Were they as colorful and as influential? They were indeed. Here's just a few:

Fred Zeiber '59 nominates chemistry teacher Clair Elmore: "We mixed up nitrates, poured them onto paper, let them dry, pinned them up and set them off with darts. Blam!"

Doug Bower '67, currently an associate superintendent for SR schools, also feels Elmore was influential. "He made you think and reason and be productive," Bower says. "Skills necessary beyond the chem lab."

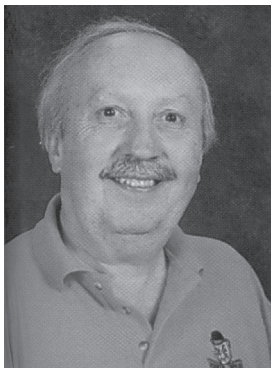
Bob Dale '58, retired Sonoma County Superior Court Judge, offers John Bamesberger, cross-country and track

### In this issue

President's Message	Page 2
Front Page Article (cont'd)	Page 3
Letters to the Editor	Page 4
Newsletter Guidelines	Page 5
In Memoriam	
About the Foundation	
Horror Haunts SRHS Halls	Page 6
Panther Alum Baseball Game	
Panther Project Fund	Page 7
Polenta Feed	
3rd Annual SRHS vs MHS Blood Drive	
Contributions & Membership News	Page 8
Memorial Contributions	Page 9
Annual Fund Campaign	
Scholarship Funding	Page 10
Board Member Honored	
Panther Patter	Page 11

*continued on page 3*

## President's Message



The past year saw continuity and change on the SRHS Foundation Board. Continuing two successful fundraising and social activities, the Golf Tournament and the Polenta Feed, the Foundation also continued to host the Student of the Month Lunch and Dinner and participate in the Blood Drive with Montgomery High and in the Rose Parade. Changes included the first

Lifetime Membership/Major Donor Reception and the first Crab Feed.

1. The Lifetime Donor Reception, chaired by Nadine Smedshammer, on January 19 at the Bennett Valley Golf Course's Legends Restaurant honored lifetime members and significant contributors to the Foundation. The wine and hors d'oeuvre event gave donors an opportunity to visit informally with members of the Foundation Board and to see Doug Pavese's Power Point presentation of the Foundation's work. In addition, Jon Stiffler took excellent photos of individuals and groups. To create an appropriate Panther atmosphere, Mike Grace and Mike Daniels displayed significant memorabilia from the SRHS museum.

2. The Foundation's first crab feed was on January 23, 2010 at the Druids' Hall. Chairperson Rosie London, was assisted by Sue Bolt, Denise Fossi, JoAnn MacDonald, Ann Porrino, Jacky Schalich and Christine Tonelli. The 220 guests enjoyed a wonderful dinner provided by Chef Randy Apel that included a ceviche appetizer, Caesar salad, a rich clam chowder and the sweetest crab this side of Alaska. The dinner was so successful that guests clamored for a second crab feed at a larger venue for 2011. To accommodate the demand, new chairperson Denise Fossi secured the Wells Fargo Center to increase capacity to 450. By December 1, the event was sold out.

3. The score: SRHS 74 and Montgomery 51 was not a basketball game that SRHS won by 23 points. In reality, the total of 125 is the pints of blood the Blood Bank of the Redwoods received from the combined efforts of the SRHS and MHS Foundations. For two years SRHS "outscored" Monty in the "bloody feud" organized by SRHS's Mike Grace and Monty's Mike Francis and Vicki Vyenielo. Panthers who want to make it three in a row over the Vikings and prove they really do bleed orange and black are urged to drop by the bank and leave a pint February 7-12.

4. What do you say about a humble corn meal event that has sold out for 16 straight years? Of course, it's SRHS's most popular single event, the annual Polenta Feed. Billed as a reunion of Panther grads and friends,

650 tickets sell in a matter of weeks. Co-chaired by Jacky Schalich and JoAnn MacDonald, last year's event was at the Veterans' Memorial Building on April 23. Paulette Gomes and Donna Peterson sold tickets on the Pandy Line and organized the seating arrangements. Denise Fossi and Justin Walling assisted in event planning, and Justin organized a successful recycling effort to benefit SRHS students. The kitchen staff, led by Chef Ray Lazzini, did an excellent job of turning the corn meal and meat sauce into a culinary work of art. The 17<sup>th</sup> Annual Polenta Feed is scheduled for April 8. Bon Appetito.

5. The 18<sup>th</sup> Annual Student of the Month Dinner, held on May 3 at the Druids' Hall was another rousing success attended by teachers, parents and students. Forty-eight of the attendees were the SRHS students selected by their teachers for recognition each month during the luncheon at Chevy's Restaurant in Railroad Square. At the dinner, co-chaired by Rosie London and Christine Tonelli, the students accepted their honors as parents and relatives looked on, making it a memorable, moving evening. The delicious dinner of pasta and salad was provided by Ray Lazzini, Almo Rossi and Jim Uboldi.

6. The May 15 Rose Parade included a major Foundation and SRHS student and staff contingent. Organized by Donna Peterson and social science instructor Terry Swehla, the contingent drew support from board members Jacky Schalich, Rosie London, Jon Stiffler and Mary Testorelli. President Chris Zeek rode in social science chair Art Horner's 1971 Chevelle convertible. The SRHS Pep Band (in vintage uniforms) and cheerleaders, who carried roses and orange and black balloons, also marched along. The throngs on the sidewalks saw Panther Pride at its very best.

7. The 15<sup>th</sup> annual golf tournament was held on September 10 at the Oakmont West golf course. Organized by committee chair Doug Pavese and assisted by Sue Bolt, Denise Fossi, Ann Porrino and Christine Tonelli, the all-day event was a success. After four hours in near perfect weather, the 90-plus golfers enjoyed a gourmet buffet dinner at the Quail Inn Restaurant. After dinner, the golfers bid in a live auction that included a Varenna dinner, Cuvaison Cottage, margarita party, VIP Table at the Crab Feed and a catered abalone dinner. Over 50 items were for bid at the silent auction along with a number of raffle prizes. Most live and silent auction items were secured by Sue Bolt. The 16<sup>th</sup> Annual Golf Tournament will be on Friday, September 9.

Tony Negri  
President  
2010-2012



coach, and remembers a Bamesberger pole vault episode: "Frustrated with the way his vaulters were planting the pole, he decided to show us. In his street clothes, with no warm up,



Frances O'Meara and her famous pupil. *Believe It or Not*, Robert Ripley '07

1939 Echo

he picked up a steel pole (no fiberglass then), ran toward the pit, planted the pole and cleared eleven feet! The SRHS record was 12' 6".

Shelly Flack-Keith '85 offers the following about government teacher Tony Negri: "He had a way of drawing the entire class into the discussion, and that made it all the more fun. He was one of those teachers who really listened to students."

About vocal music instructor Dan Earl, Jill Aguilera '85, who works at Healdsburg's Everett Ridge Winery, says,

"He actually made me feel I had talent."

Dana (Wendy) Bishop '85, now a photographer in Vermont, says Earl "gave me a chance to try out for chorus and I somehow got in. He had high expectations, and I wanted to meet them."

Mary Main Testorelli '47, former Foundation director, feels that Mitchell Soso should be on the list. She says, "He came back from the war and really taught us. He was so motivational."

English teacher Eugene DeSoto, another WW II veteran and one who taught 51 years, was nominated by many former students. David Jager '86, who teaches music in the Toronto schools, remembers, "He was . . . a sinewy, All-American veteran with a huge heart under that leathery scowling . . . I'd heard his class was terrifying . . . and I thought taping a sign that said "Abandon all hope, All ye who enter here" to his bungalow's front door would be funny. He would make a stop at my desk, scowl at me and growl, 'Abandon all hope . . . ' He'd hammer home that we should stick to the topic instead of wandering off into our own opinions."

John Fox '86 reinforces this opinion of DeSoto: "I found myself in the English class of Eugene DeSoto. Never in a million years would I have thought that . . . a teenager like myself could form such a bond with a stiff, strict educator . . . who encouraged his students to call him 'Coach' . . . he recognized my need for creative expression and channeled it into my writing . . ."

Linda Green Burns '85, history and drama teacher in the Chicago area, says of DeSoto, "I learned how to write thanks to him. I also remember how terrifying he was in class and how warm outside of class."

Drama teacher Glen Guymon, who developed speech, debate and drama winners in national level contests, also developed a strong following after he abandoned drama to teach other subjects. Donna Dennes Peterson '67, Foundation director and school secretary at Comstock Middle School, remembers Guymon as "a fantastic teacher. I loved typing, and I learned so much from him. He never deviated from his subject matter. I took his teaching and my typing skills into my career."

In 30 years (1938-58), Jimmy Underhill led the football Panthers to five NBL championships and two undefeated seasons that set a mark yet to be surpassed. His influence upon his players is still discussed whenever those athletes gather.

Western civilization teacher Clifford Hodder had high expectations for his college-bound seniors and instilled in them critical thinking and writing skills that would provide them success at the collegiate level. A stickler for thesis, structure, usage and documentation, he prepared his students from 1956 until he joined the SRJC faculty in the late '60s.

Jim King in agriculture, Spanish teacher Irene Scott, Helen Valentine and Martha Erwin in English, art teacher Lloyd Wasmuth, history teacher Dave Condit and Elmer Brown who taught special ed, advised the California Cadet Corps, coached football and swimming, taught cooking classes, advised student government and many other classes—they



Students gather at the new sign to express appreciation of SRHS and its staff  
photo by Marlene Callen

must all be considered as must the other excellent and influential teachers not mentioned.

That today's faculty continues to inspire and motivate students is evident in the fact that SRHS was forced early this academic year to close its "open door" policy to new students. This most popular public high school has no room for those who want to learn from its faculty. Those students must attend one of the other high schools, all of which have room.

# Letters to the Editor

Ed. Note: The Foundation is especially grieved at the passing of Irene Waters Maxwell '25, one of its most loyal supporters since the beginning of the organization. One of her daughters sent us the following sensitive memory.

Dear SRHS Foundation:

Irene Waters Maxwell '25, age 101 years, died on October 8, 2010. Proud of her ties to SRHS and the Foundation, she epitomized "Once a Panther, Always a Panther." Before my friends and I had our drivers' licenses, she would drive us to the home football games and then go up in the stands to sit with the dads and root for the Panthers. When SRHS won, she insisted on driving around the courthouse, honking the horn in celebration. She was a strong supporter of the Foundation and eagerly looked forward to the annual Polenta Feed.

Sincerely,  
Martha Maxwell '57

Dear SRHS Foundation:

Thank you for the generous donation that allowed us the opportunity to spend the day at the deYoung Museum and view the Post-Impressionism exhibit. The works were incredible and awe-inspiring.

Sincerely,  
SRHS Visual Fine Arts Classes

Ed. Note: Instruction in Italian has not been a part of the SRHS foreign language curricula since the early 1920s. Last spring, faculty member Carla Forchini proposed Italian again be offered to students. Her proposal was met with great success as some 68 students signed a note of thanks for the financial support of the Foundation. A sampling follows:

Motto grazie, SRHSF – Paola  
Grazie per tutto! Mi piace la classe di Italiano. – Mariah  
You are motto bravissimo! – Jamie  
Grazie! Thanks for supporting us. – Dylan  
Grazie! Italiano is my favorite classe! – Laurie

Dear SRHS Foundation:

Please find a check for a three-year membership for my daughter-in-law, Julie Ward Frost '98. She married my son, Brian Frost, in 2007, and we became a two-Panther family! Julie graduated from the University of Colorado at Boulder and is a pharmaceutical rep with Pfizer.

Thanks for all your hard work for SRHS and for the great newsletters you send out to members. I always enjoy receiving them!

Sincerely,  
Nancy Seacord Frost '71

Dear SRHS Foundation:

On behalf of the Board of Education, I am writing to express our gratitude for your recent donation totaling \$13,156.57. Your donation will help fund the following at SRHS:

field trip for ArtQuest  
reading materials for the English department and the library  
newspaper subscription  
field trip for special education  
software for ROP class  
English/social science newspaper subscription  
LCD projector bulbs for social science  
science lab equipment  
FFA convention  
John Mattern memorial

Thanks again for your continued support. It is truly appreciated.

Sincerely,  
Bill Carle  
President

Dear SRHS Foundation:

Thank you so much for your generous donation of Press Democrat newspapers! The news is a great teaching tool for American history and social studies. Current events held in students' hands are invaluable to assess new events and relate them to history. Students enjoy reading about local high school sporting events and social calendars to stay informed.

In my life skills classes we now have access to current trends in health. In my "On Your Own" class we can now conduct job searches and discuss economics.

Thank you for your generous donation. As we have become part of the electronic age, it is so refreshing to pick up a REAL newspaper and enjoy it. Literally, we could not do this without you. Most students do not receive the paper at home.

Sincerely,  
Terry Swelha  
Instructor

Dear SRHS Foundation:

Thank you so much for granting the SRHS World Language Department \$3,000 for the purchase of projectors, cards and locks for our classes. We really appreciate your time and help.

Very Gratefully,  
Danitsa Finch  
The World Language Department

## About the Foundation

The Santa Rosa High School Foundation, a chartered non-profit organization with the State of California, was established in 1988 to provide financial support for and community involvement in the school's activities and to preserve its rich traditions and heritage.

The Foundation also functions as an alumni association, sponsoring activities for graduates, but membership and activity participation is not limited to SRHS graduates.

*Santa Rosa High School Foundation News* is published quarterly by the Santa Rosa High School Foundation, P.O. Box 11002, Santa Rosa, CA 95406. Subscription rate is \$25.00 per year, which includes membership in the Foundation. You may also sponsor an edition of the newsletter. Please contact us if you would like more information, 707-571-SRHS.

*Historian/Editor:* Mike Daniels '59

*Newsletter Publisher:* Alicia Hodenfield '85

*Newsletter Team:* Mike Daniels '59, Mike Grace '65, Penny Hastings '59, Alicia Hodenfield '85, Peggy King Leiser '40, Carol Laabs Patterson '55, Elva Pringle retired staff, Jacky Cooper Schalich '57, Nadine Wiggins Smedshammer '59

## SRHS Foundation Directors

Carol Laabs Patterson '55  
JoAnn Hembree MacDonald '56  
Jacky Cooper Schalich '57  
Doug Pavese '58 \*  
Nadine Wiggins  
Smedshammer '59  
Mike Daniels '59 \*  
Ann Hutchinson Porrino '61  
Jim Ward '62  
Mike Grace '65 \*  
Rosie Clarke London '65  
Donna Dennes Peterson '67 \*  
Paulette Guaspari Gomes '68

Karen Skelgaard Petersen '72  
Denise Dwyer Fossi '72  
Jon Stiffler '72  
Mary Schaefer '76  
Justin Walling '89  
Christine Romani Tonelli '88  
Matthew Metzger '91  
Sue Bolt Friend  
Tony Negri Retired Faculty  
Art Horner, Faculty Liaison

\* Founding Directors

## Giving Through the SRHS Foundation

- 1.) Establish an Unrestricted Fund (in your name or anonymously) with a gift of \$10,000 or more;
- 2.) Establish a Restricted Scholarship Fund with a gift of \$10,000 or more;
- 3.) Include a bequest or Planned Gift in your estate plan;
- 4.) An Unrestricted cash gift of any amount that will be directed by the Board to a current need program

A wide variety of gifts are accepted including:

- Cash
- Publicly traded securities
- IRAs or life insurance policies with the Foundation as beneficiary
- Remainder of a Charitable Trust

For further information, please contact: Doug Pavese, SRHS Foundation, P.O. Box 11002, Santa Rosa, CA 95406; or call Doug at 707-538-3167.

Please speak with your tax advisor regarding your charitable contribution.

## NEWSLETTER SUBMISSION GUIDELINES

When submitting photos for the newsletter, be sure to provide the identity of the individuals in the photos, the year the photo was taken, if you would like the source of the photo identified and any other relevant information regarding the photo.

Article submissions are invited. Letters should be 150 or fewer words. All submissions are subject to editing and become the property of the Foundation. We also invite your submissions to Panther Patter. Please provide information about SRHS graduates including about family, work and what they have been doing since high school.

Submissions of photos, with identification, and text can be made by e-mail, through our website and by mail. E-mail to [mdaniels@sonic.net](mailto:mdaniels@sonic.net) or mail to P. O. Box 11002, Santa Rosa, CA 95406.

NEXT DEADLINE:

April 1, 2011 for the  
May, 2011 mailing



## In Memoriam

Emmett O'Neill	Instructor
Carl Hegerhorst	Instructor
Irene Waters Maxwell	1925
Adele Vegod Gordon Fogelhut	1940
Edsen Bryant	1940
Elizabeth Bohan Gluch	1944
Edward Venturi	1945
Ed Bassignani	1951
Don Jorgenson	1952
Lee Ann Creasy	1976
Albert Rogina	1976
Cooper Plaxco	2009

## Horror haunts SRHS halls

by Mike Daniels '59

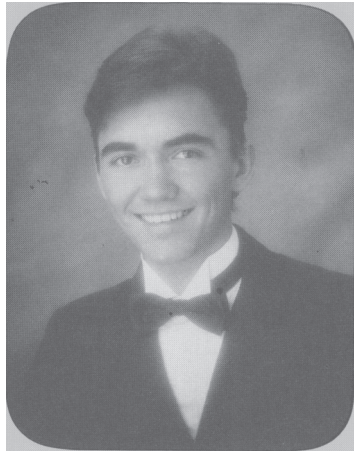
Intrigued by horror films from an early age, '87 alum Daniel Farrands as a student more than once came to the SRHS campus at night to develop his budding cinematic skills. Last November he returned to campus not to film but to interview school board member Frank Pugh and Associate Superintendent Doug Bower about the board's decision in 1996 to turn down director Wes Craven's request to film *Scream* on the SRHS campus.

Farrands' interview with the two will become part of a biography about horror film maker Craven that Farrands is developing for a show next April on TV's Biography Channel.

After considerable discussion that involved disruption to education, content, financial benefit, litigation and other matters, the board made its decision and Craven abandoned the struggle and took his cameras to Sonoma for filming. But he had the last word. As the credits roll at the

end of *Scream*, the words "No thanks whatsoever to the Santa Rosa City School Governing Board" flash on the screen.

During his years as a SRHS student, Farrands not only found time to follow his interest in horror but also followed academic and extra-curricular activities. He recalled being especially encouraged by English teacher Joan McCue. He also had words of praise for history teacher



Daniel Farrands

1987 Echo

Marty Powell.

Government teacher Tony Negri remembered Farrands as a "pretty verbal" student and "interested in the goings on" in the larger world.

Student Body President Todd Caven recalled that Farrands was "pretty instrumental" in gathering materials to ensure that the annual convention to elect the next year's student body officers was successful. "We worked together on Student Council. He was the Historian and I really liked Dan. He was shooting film back then," Caven continued.

After graduation, Farrands followed his interest to Hollywood and is today well known as a producer, writer and director of a number of horror films, TV documentaries and videos. Among his many credits are *Never Sleep Again: the Elm Street Legacy*, *The Haunting*, and *Amityville: Horror or Hoax*.

## Panther alumni baseball game scheduled

The SRHS Panther Baseball Club recently announced an upcoming April 2 contest between baseball alumni and the 2011 team on the SRHS home diamond.

Pregame activities are slated to begin at 11am and the game's first pitch to be tossed at 12:15pm.

All SRHS alumni and supporters are urged to become members of the Panther Baseball Club, an organization dedicated to on-going fundraising activities that will improve and maintain the baseball facility. Membership fees and alumni game proceeds will be used to develop



1927 Baseball team

1927 Echo

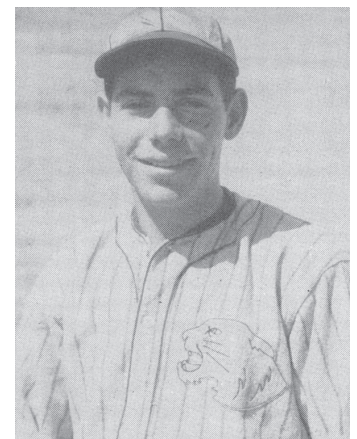
the improvements. Club members will enjoy recognition in the project program and receive regular updates on the progress of projects.

The purchase of a \$25 membership will include game admission and lunch. Current SRHS students will be admitted to the alumni game for \$2 and non-baseball club members for \$5. Both will receive a hot dog and a soda.

In addition to the game, the alumni game program will include presentation of Panther baseball alums, SRHS athletic memorabilia, and preview of planned improvements.

The Panther Baseball Club is interested in developing a registry of player alumni—those who attend the game and those who can't. Registration can take place on game day or by calling Michael Burch at 707-526-1044 or by e-mailing [pantherbaseballclub@gmail.com](mailto:pantherbaseballclub@gmail.com).

Alums who'd like to play in the game are asked to indicate they would as soon as possible to the above contact info.



Ralph DeMarco, 3<sup>rd</sup> base

1943 Echo

## Annual Polenta Feed is near by Donna Dennes Peterson '67

The time is here! Tickets are now on sale for the Foundation's Annual Polenta Feed. Scheduled this year for Friday, April 8, it will again be held at the Veterans' Memorial Building. No-host cocktails will be available at 5:30 and dinner will be served at 7pm.

Tickets are \$35 per person and are available for members only purchase until February 22 through the PANDY Line, 571-7747. Tickets sell out quickly, so be sure to call and order yours today.

Foundation members receive first priority to purchase, and they may order up to four tickets. Spouses are considered Foundation members. Leave your name and telephone number on the PANDY Line, and your call will be returned the following day.

After the February 22 date, tickets will be sold on a first come, first served basis to all supporters of SRHS.

Because tickets to this popular event sell so quickly, there will be no waiting list. You are urged to call now.



## Panthers and Vikings ready to bleed by Mike Grace '65

For the third consecutive year, the SRHS Foundation issued a challenge to the Montgomery High School Education Foundation to battle over which group can donate the greatest number of pints of blood to the Blood Bank of the Redwoods.

The contest welcomes all backers of both schools—alumni, students, parents or friends—to donate pints on February 7 through February 12.

The blood bank is located at 2324 Bethards Drive, Santa Rosa. Telephone appointments can be made at 545-1222. Donors can also drop by the bank Monday through Thursday from 12 pm to 7 pm or Friday or Saturday from 9 am to 3 pm.

While the Panthers have won the last two contests, the Vikings mounted a serious challenge in 2010. Saturday donors kept the bank staff going until well after closing time. The atmosphere was charged with competitive calls and challenges. This year, organizers hope for more blood and more competition.

In the last two years, a total of 239 pints of blood have been donated to benefit the community. In '09 the Orange and Black defeated the Red and Grey by 62 pints to 52 pints, and in '10 the score was 74 pints to 51 pints in favor of the Panthers.

Put the dates on your calendar and gather some friends who'd like to leave some blood in support of their alma mater. Show up February 7-12 at the blood bank and bleed for your school.

### Panther Project Fund Grants 2010-11 School Year December, 2010

Mathematics Club – TI-83 calculators	\$1,031.32
Mathematics – overhead projectors	852.11
Debate Club – tournament support	1,000.00
Special education - supplementary books	307.90
World language – overhead projectors	3,000.00
Industrial technology – C clamps	1,500.00
Lauritzen directed gift – performing arts	2,000.00
Year to date	\$33,684.30

### Class of 1985 celebrates! by Alicia Hodenfield '85

The SRHS Class of 1985 celebrated its 25<sup>th</sup> Reunion during the weekend of July 30-31. The celebration kicked off with a no-host reception at the Chrome Lotus in downtown SR (Note to planners of reunions: Call the bar ahead to let them know you're having 50 or so people drop by – they were super great and at first we had to wait as we had neglected this step.) A tour of the SRHS campus was held late Saturday morning and the main event was that evening at Legends at the Bennett Valley Golf Course. We chose not to have a sit down dinner or buffet, but instead had a selection of appetizers to allow people to mingle and talk and not feel they had to sit down. Classmates traveled from as far as Europe and all over the United States! It's always so great to re-connect with old friends and to make new friends. We utilized technology to contact many of our classmates, and have a website (srhs1985.wordpress.com) and our own page on Facebook (Santa Rosa High School Class of 1985) with our pictures and messages. We will continue to use this page and the website to keep our classmates up to date with relevant information and use it in an effort to continue to find our missing classmates. Looking forward to the 30-year gathering in 2015!

*Have you included the Foundation in your will?*

Foundation members and supporters faced many opportunities and choices throughout the recent holiday season. The phone continues to ring with financial requests for worthwhile causes, so many that we must pick and choose carefully which ones we are able to support. The Foundation is grateful that so many of you recognize the needs at SRHS and donate funds that enable us to supply financial support to help meet those needs. Especially through this past holiday season, we thank you for your continuing support and generosity.

The Foundation welcomed 19 new members and received 187 membership renewals since the last newsletter. The contributions and memorial gifts this period total \$10,229. The following generous members and friends contributed over and above their membership fees:

Lynda Angell '59	Michael and Lynn Davis '88	Betty Lyon '53
Gail Arata-Cronan '55	Mary Desmond Friend	Roberta Murai '66
Pauline Baldenegro Friend	Gloria Duncan '54	Lynn Nelsen '64
Christine Blem '69	Charles Dunnet '48	Jerrold Peterson '60
Marian Boyrie '65	Lisa Fitzpatrick '69	Harvey and Judy Podstata '52
Judy Bradshaw '85	Ann Garzoli '51	Patty Reynolds '82
Corrick Brown '47	Don and Madeline Getts Friends	Henry Schukler '46
Dorothy Calegari '64	Mary Hallock '41	John Shackleton '54
Barbara Camacho '69	Robert Hastings '49	Simpson Sheet Metal, Inc. Friends
Anthony Camozzi '52	Amelia Hutto '42	Daniel Spencer '60
Carol Carr-Colglazier '58	Martha Keegan '47	James Streeter '76
Bob Cate '57	Lou Knecht '44	Neva Swensen '64
Ed Caughey '60	Kathleen Koenig '62	United Way Friends
Edwin Ciavarelli '38	Lorene Lake '61	Carol Winter '65
Don Coover '62	Margaret Lauritzen Friend	

ONE THOUSAND PANTHERS: Richard Arrowood '63, Doug Pavese, '58, and Ann Porrino, '61.

LIFETIME MEMBERS: Peggy Hudson Centanni, '39, Margo Mazzetta, '72, Richard Arrowood, '63, Jack Hartman, '66, and Monica Baldenegro, '95.

If you have friends who are interested in joining the Foundation, please encourage them to do so by using the form in this newsletter or by going on-line at [www.srhsf.org](http://www.srhsf.org) to make contributions and join. Any concerns or questions you have about your membership or contributions should be directed to Nadine Wiggins Smedshammer at 707 544-3158, or [nsmeds@sbcglobal.net](mailto:nsmeds@sbcglobal.net).

### **Membership contact changes coming**

As the Foundation moves forward to embrace technology, cut costs and become "greener," the need emerges to gather e-mail addresses from Foundation members who would prefer to receive the Newsletter and other information in electronic format.

Doing so will save postage and paper and quickly allow the Foundation to communicate with its membership via technology with information about events, announcements and other important SRHS topics.

The Foundation website is regularly updated with such information. For example, a video about the terrific award-winning electronics program at SRHS was posted. You can access it at [www.srhsf.org](http://www.srhsf.org).

The list of e-mail addresses will remain the property of the Foundation and will not be sold or otherwise provided to individuals or organizations.

Please send your up-to-date e-mail address to [info@srhsf.org](mailto:info@srhsf.org).



## *Memorial & Special Contributions*

### *The Betty Abrams Memorial*

Betty Grove Friend  
Bill and Doris Nash '45  
Joyce Thompson Friend

### *The Dean Abramson Memorial*

Sueanne Marshall '47

### *The Bruce Barclay Memorial*

Marven Mays Friend

### *The Rueben Beseda Memorial*

Doug and Lynn Rackerby '72

### *The Leone Steele DeLong Memorial*

James Miller '40

### *The Wally Fawcett Memorial*

Oren and Nadine Smedshammer '59

### *The Russ Gleason Memorial*

Julie Gleason '65

### *The Bruno Malchow Memorial*

Jane Malchow Friend

### *The Irene Maxwell Memorial*

Norma Adams '49  
Margaret Bock '44  
Sally Gard '57  
Yvonne Horn '49  
Milton and Corrine Kingsbury '48  
J. Myron and Betty Lord Friends  
Barbara Schefer '44  
Gene Scovil Friend  
James and Sally Sokoloski Friends

### *The Ed Noonan Memorial*

James Miller '40

### *The Tracy Schalich Memorial*

Mary Desmond Friend

### *The Gwin Stumbaugh Memorial*

Mike Daniels '59 and Penny Hastings '59  
Wesley Farmiloe '61  
Kim Kobre Friend

### *The Bob Testorelli Memorial*

Eugene and Kathy Bussman Friends  
Mike Daniels '59 and Penny Hastings '59  
Richard and Anne Lewis Friends  
Sueanne Marshall '47  
George Payne Friend  
Barbara Schefer '44

### *The Eric Wiggins Memorial*

Mike Daniels '59 and Penny Hastings '59  
Oren and Nadine Smedshammer '59

### *In Honor of Bill Fulwider*

James Miller '40

### *In Honor of Rae Gambini*

James Miller '40

### *The Berta Wiggins Scholarship Fund*

Mike Daniels '59  
Penny Hastings '59  
Clyde Wiggins '52

(Note): If you wish to have your donation acknowledged to the family of the memorial honoree, please include an address for that purpose.

## **Annual Fund Campaign 20/10-11: a six month report**

When the Foundation kicked off its Annual Fund Campaign this academic year, it created choices by which members, parents and supporters could direct donations to general campus needs, specific departments or the Permanent Endowment Fund.

Through December, the Foundation received \$10,425 in support of the new campaign. The total includes five \$1,000 gifts to the One Thousand Panthers Endowment program, a \$2,200 gift to industrial technology, \$2,000 in support of auditorium needs, and \$1,225 divided among academics, agriculture, athletics, library, visual/performing arts and construction technology.

To make a tax deductible donation in support of this year's annual campaign, please complete and mail it in the enclosed response card and pre-addressed envelope. The Foundation sincerely thanks every contributor as donations absolutely make a positive difference in the quality of the educational and sports programs at SRHS.

Should you have questions regarding donation options, please contact Doug Pavese at [dougpavese@hotmail.com](mailto:dougpavese@hotmail.com) or 707-538-3167.

### **Directed Gifts Annual Fund Campaign\***

Industrial Technology	\$2,200.00
Academics	250.00
Agriculture	75.00
Library	200.00
Visual/Performing Arts	450.00
Building and Construction	
Trades	100.00
<b>Total</b>	<b>\$3,425.00</b>

\* donations intended  
for specific programs

# How scholarship funding works

by Nadine Wiggins Smedshammer '59

## Senior Scholarships

Many Foundation members and supporters have asked, "How many different scholarship funds for seniors does the Foundation administer, and what's the source of those funds?"

The Foundation is very proud of the many scholarships available to SRHS students. Each spring the Scholarship Committee has the great pleasure of meeting with counselors to determine the recipients. The dollar amount of each scholarship depends on how much interest its fund earned during the year. Of course, the more money in the fund the larger the scholarship. Scholarships currently range in award from \$250 to \$1,250.

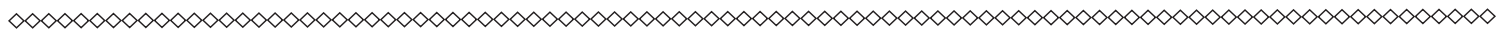
This is where you come in. If you would like to donate to a scholarship fund in order to increase the dollar amount awarded each spring, please send your check to the SRHS Foundation, P. O. Box 11002, Santa Rosa, CA 95406. Indicate on your check the scholarship you would like to support.

If you would like more information, contact Nadine Wiggins Smedshammer at 707-544-3158 or nadine@coreutilities.com.

- SRHS Foundation Scholarship
- SRHS Heart of the Panther Scholarship
- Jack Kellar "Lucky Jade" Scholarship—Instrumental Music
- Jack Kellar "Lucky Jade" Scholarship—Vocal Music
- Robert Clell McKinney Art Scholarship
- Bruce Mecchi Memorial Scholarship
- Lisa Nilsen Ag Scholarship
- Jerry Poncia Music Scholarship
- Jerry Poncia Ag Scholarship
- Lorenzo Solis Memorial Scholarship
- Berta Wiggins Golf Scholarship

### Funds that support specific departments or activities

- Marsha and Jesse Carney Memorial Fund – cheerleading and dance
- Edna Parker Memorial Fund – Student of the Month lunch program
- Albert Clapp Memorial Fund – Panther Projects
- Joe Espinosa Memorial Fund -- automotive
- Nancy Fisher Memorial Fund – boys' soccer
- Pamela Griffin McMahon Memorial Fund – general school needs
- Dayle Puckett Memorial Fund – baseball
- Colombe "Coke" Zulani Memorial Fund – Panther Projects



# Board member honored

by Penny Hastings '59

Mike Daniels was recently honored by the City of Santa Rosa for his long-time community service, specifically for his many contributions to Santa Rosa High School. Called "Mr. Santa Rosa High" by Santa Rosa City Merit Award Committee member and former SRHS English teacher Jim Dunwoody, Mike has played multiple roles at and for SRHS since his student days. A 1959 SRHS graduate, Mike later returned to his alma mater to teach English and retired after 28 years in 2005.

Mike is one of eight other dedicated alumni who founded the SRHS Foundation in 1988. He has been actively involved ever since. One of his major contributions was the creation of the Foundation Newsletter, which he has edited, five-issues a year, for most of the last 22 years.

According to Dunwoody in his presentation to a large audience at the Santa Rosa City Council Chambers on November 8, the publication has grown from its small premier issue to a 12-page newsletter with content that varies from historical articles to information about class reunions to lists of projects funded by the Foundation (over \$1.5M has been given to SRHS) to the popular "Panther Patter" feature. Through the newsletter over 1400 Foundation members stay in touch with SRHS current and past activities and accomplishments.

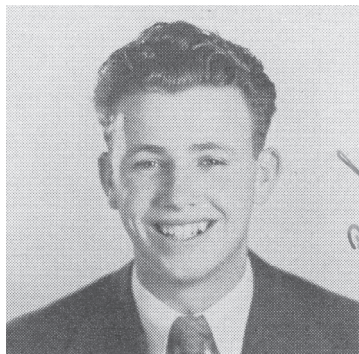
Additionally, Mike and Tony Negri conduct campus tours, mostly for alumni and class reunions. Other tours are sometimes given. In the past few years a group of foreign exchange students from France, Italy and China have had the opportunity to visit an American campus, thanks to their volunteer guides.

Another of Mike's major projects has been participating in the creation of the SRHS Museum. "Not many high schools can boast a museum," says Dunwoody. Filled with artifacts and photos and memorabilia that go all the way back to the school's inception in 1874, the museum is located in a former business office on the second floor of the main building. SRHS instructors use the museum as a history-teaching opportunity, while visitors enjoy seeing the eclectic collection from the past...from Block S jackets to cheerleading outfits to old yearbooks and photos, the museum is a living entity, with a frequently changing exhibit, thanks to Mike.



by Pandý

As noted elsewhere in this issue, the Foundation has suffered the passing of **Irene Waters Maxwell '25**, a very spirited Panther and strong supporter of the Foundation since its inception in '88. Pandý especially remembers how Irene led the alumni in rendition of the SRHS fight song at the All-Years' Reunion in '89 and how she did it again as honorary Spirit Queen in '06 at the homecoming football game. She was one dedicated Panther! . . . One of the most inspiring and respected instructors ever to serve SRHS was social science instructor **Emmett O'Neill**. Sadly, he passed away on New Year's Day. He had retired in '99 and was a man of many, many accomplishments, perhaps the most notable of which was his curricular development of Asian Studies, an influential class for seniors. Part of his legacy is the vast numbers of students who continue to remember his ability to get them to think and to question . . . The Foundation lost one of its most dedicated board members last summer with the passing of **Gwin Stumbaugh '48**. Always the "go-to" guy whenever and wherever logistics were concerned, Gwin saw to it that



Gwin Stumbaugh '48

1948 *Echo*

the annual golf tournament and polenta feed always were seamless and smooth events. He is sorely missed . . . On a positive note and speaking of spirit, the '59 **Song-leaders** recently came from homes in Hawaii, Los Angeles, Chico and good ol' SR for a weekend reunion. The group included **Penny Hastings, Ann Mitchell Quinn, Pat Townsend Thompson, Karin Kinney Camilli, Patty Hill Shepherd and Jany Maximov Condren**.

They were hosted by **Pam Grace Stone**, a '59 Ursuline grad. One day's activities concluded with a special wine tasting event at William Harrison Winery in the Napa Valley. Owner **Bill Harrison '59** hung orange and black pom poms in the tasting room in honor of the ladies . . . Back in September, history instructor **Art Horner** accessed the White House web site and showed his students President Barack Obama's annual speech to high school students that took place at a public high school in Philadelphia. In the motivational speech

the president offered a "commencement challenge" and mentioned he had been at a high school in Michigan the year before. Wheels at SRHS clicked. Horner made his own challenge to his classes to invite the president to attend the commencement exercises of the **Class of 2011**. The students accepted the challenge, but before writing they developed an outline of reasons why the president should come to SRHS. The reasons included the school's tolerance,

diversity, magnet programs (such as agriculture), ArtQuest and campus spirit. While Horner says there's been no response yet, you just never know.

Could happen . . . When Spanish instructor **Phil Weil** retired last June, he left behind binders filled with photos of the Students of the Month. Those treasures will find a place in the museum . . . **Dan Earl**, retired SRHS vocal instructor, continued practicing his craft the Saturday before Christmas as he has for years when he again conducted the annual Redwood Empire Sing-Along

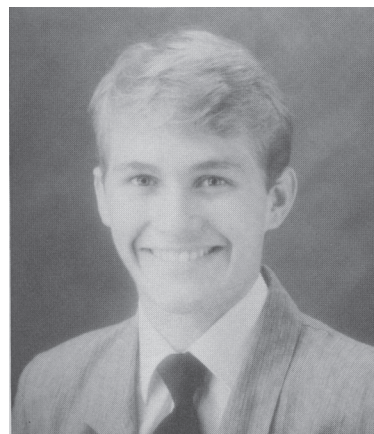
Messiah in the SRHS auditorium with a huge crowd of participants and listeners . . . More donations to the SRHS Museum: **Perky Newcomb** sent a number of items in memory of **Norma Tomlinson '58**, including a commencement announcement from 1931, *Echoes* from 1925-31 and a 1958 edition, a 1958 recording of the SRHS Orchestra in which Norma played, a 50<sup>th</sup> reunion Memory Book for the Class of 1958 and a plaque honoring Norma's athleticism in GAA. The plaque sits beside the identical one awarded the next year to Norma's sister, **Karen Tomlinson '59** . . . In Paris, **David Vann '85** recently was awarded the prestigious Prix Medicis for best foreign novel for "Sukkwan Island," a novella

taken from his *Legend of a Suicide*. In the 40 years this French prize for literature has been given, only 8 Americans have been recipients. David joins the notable company of Philip Roth, Paul Aster, John Hawkes and Dave Egges. David's latest book, *Caribou Island*, was published in January.



Irene Waters Maxwell '25

1925 *Echo*



David Vann

1985 *Echo*



SRHS FOUNDATION

"Once a Panther, Always a Panther"

P.O. Box 11002

Santa Rosa, CA 95406-1002

NON PROFIT ORG.
U.S. POSTAGE
PAID
SANTA ROSA, CA
Permit No. 441

Address service requested

Time to renew?

Check the mailing label to see. Use the enclosed envelope for your renewal or to make a donation.

Thank you!

Dated material
Please do not delay
Deliver by February 1, 2011

KEEP IN TOUCH WITH YOUR PAST & SUPPORT SRHS' FUTURE WITH YOUR GENEROUS CONTRIBUTIONS AND MEMBERSHIP FEES

Name (please also include maiden name if applicable)

Address

City

State

Zip

Telephone

E-mail

I am: [ ] A Grad (year \_\_\_\_\_) [ ] Parent of grad (year(s) \_\_\_\_\_)
[ ] Staff [ ] Friend

Membership and contributions:

[ ] 1 yr \$25 [ ] 2 yrs \$45
[ ] 3 yrs \$60 [ ] Lifetime \$500

Please find enclosed:

\$\_\_\_\_\_ Membership fees
\$\_\_\_\_\_ Tax-deductible contribution to assist the SRHS Foundation in reaching its goals

Please charge my: [ ] Visa [ ] Master Card [ ] Discover Card

Card# \_\_\_\_\_ Expiration date \_\_\_\_\_

Name as printed on credit card \_\_\_\_\_

Signature \_\_\_\_\_



You may make tax-deductible contributions, join and renew your membership on-line at our website www.srhfsf.org OR return this form to: Santa Rosa High School Foundation, P.O. Box 11002, Santa Rosa, CA 95406.