



SANTA ROSA HIGH SCHOOL FOUNDATION NEWSLETTER

Winter, 2021

Vol.34

Issue 1

The mission of the Santa Rosa High School Foundation is to serve as a charitable organization to unite Santa Rosa High School alumni, parents, faculty, staff and interested community members in order to provide financial support for SRHS programs and students, and to preserve and document the history and traditions of SRHS.

SRHS FOUNDATION: A FINANCIAL HISTORY

By Don Cambou

You might say that the SRHS Foundation started because of a cancelled J. V. Football game. In 1985, the team had to forfeit because the volunteer coach couldn't leave work. Football loving parents decided to raise money to fund a coaching position. They were criticized because budget cuts made necessary by Prop. 13 affected arts and academics just as much as football. No new coaching position was created. Still, the exercise planted the seed of an idea to create a financial support group for an economically ailing school. It finally bore fruit in 1988, when a small group, organized by Rick Call '67 and Mike Grace '65, applied for California nonprofit corporate status, and created the SRHS Foundation.

The nascent Foundation made its first grant in the 1988/89 school year through its newly established Panther Project Fund (PPF): \$788. But the Foundation stumbled through its first few years, first hosting an All Years Reunion, and then a few money losing formal dinner dances at the Flamingo Hotel. Foundation membership grew slowly, providing some income. By the 90/91 school year, the Foundation granted a total of \$4,471 for school projects. All these early grants were "pass through" money; meaning if the Foundation raised the money, it all went to the grants.

A founding board member, Doug Pavese '58, had a different idea. Why not keep the "pass through," money flowing to the school, but at the same time establish a permanent endowment? He knew about endowments because his position at Morgan Stanley allowed him to work with several of them, including Sonoma State's endowment. He won over the other board members and the Foundation Endowment Fund was born. "I really believed, if we build it they will come," Pavese remembers.

The Endowment money is NOT "pass through" money. Instead, the PRINCIPAL remains the same, but its EARNINGS are available to be spent. For example, if \$100,000 of endowment money earns 5% a year, approximately \$5,000 is available to be spent -- every year.

Continued on page 3

BACK TO SCHOOL: BUT WHEN?

by Don Cambou

Santa Rosa High students, as well as the rest of Sonoma County's public school students, have been off campus, "distance learning" for almost a full year now. The question is easy to pose: When will they be back in school? Unfortunately, the answer is far from easy. I spoke with SRHS Principal Kimberly Clissold about when students might return to the campus. She was reluctant to give firm answers. And rightly so. Santa Rosa High must follow the Santa Rosa City Schools District guidelines. That District must respect Sonoma County guidelines. And the county must respect California state guidelines. The District must also negotiate with the 900 member Santa Rosa Teachers Association.

Clissold said that SRHS is working on plans to bring teachers and vulnerable students back to school as a first step. She could give no definite date for when that might happen. There are encouraging signs, however. High school teachers that will be dealing with students are now getting vaccinated against Covid. That's in addition to the

Continued on page 2

PRESIDENT'S MESSAGE

By Mary Beseda

It is hard to believe that we are heading into March 2021 and the students at SRHS are still doing distance learning, and not in the classroom! The Foundation Board is still conducting our Board Meetings via Zoom; special thanks to Art Horner, school liaison, for inviting six of his students to share their experiences with distance learning, it was very enlightening. The Foundation has made it our goal and mission to assist the school and students wherever we can through these uncharted times. Thanks to the support of our members, alumni, staff, donors and the families at SRHS, the Polenta Committee launched our first Online Raffle! The raffle started on February 10 and closed on February 28, 2021. The Grand Prize, a bench with planters was made by the SRHS Woodshop! The plan is to pull the raffle winners on March 8, 2021 with the members of the Polenta Committee. We will then contact the winners and deliver the prizes. As February 25, we had collected \$2,000.00+ for the raffle!

A long time Board Member, Carol Laabs Patterson '55, left the Board as of February 28, 2021 after more than 14 years. Carol was our Data Base Manager for the past 13 years, in charge of Donor Perfect our system that keeps track of Membership, Donations, and events. We quickly appreciated that Carol's position required a skillset with a background in IT, and someone who had 20 to 30 hours per month of time to donate! I then reached out to our Sales Rep at Donor Perfect for a list of people or companies who could assist with the process of covering Carol's position. Interviews were done and a company named Soukup Strategic Solutions was selected, effective February 1, 2021. Soukup has been working with several Board Members including Carol through the transition. Moving forward we look forward to Soukup's knowledge

of Donor Perfect to continue to expand our utilization of the system. Several of Carol's duties have also been absorbed by other Board Members. The Board of Directors want to thank Carol for the loyal and invaluable support she has afforded the Foundation, not only as the Data Base Manager, but also her support at our various events and on several committees.

The Scholarship Committee, comprised of Nadine Smedshammer, Monica Baldenegro, Kristine Erken, Tony Negri, Donna Doyle, Penny Hastings, and Mike Grace, have been busy at work reaching out to the staff at SRHS for their selections of nominees for the 40+ scholarships to be awarded this year! The plan thus far is to announce the winners via Zoom.



Mary Orsborn Beseda
President

We are still looking for new Board Members, if you are interested or would like general information please contact me directly at info@srhsf.org or leave a message on the Pandy Line 707-571-7747.

I want to thank our current Board Members for their loyal support of the SRHS Foundation and the students and staff at SRHS.

Once a Panther, Always a Panther!

Back to School Continued from page 1

teachers who are 65 and older. Well over 100,000 of Sonoma County's 500,000 residents have already received at least one vaccine dose. Infection rates and hospitalization rates are steadily declining.

UPDATE: The SRCS District just announced plans to return high school students to school for "hybrid" instruction starting April 26. By the time you read this, there may well be different or additional plans and firm dates. For current details, Clissold suggests visiting the SRCS District website, www.srscschools.org, and looking at the District's "Return to School Information."

SRHS Foundation Directors

Monica Baldenegro '95	Rose Machen Moeller '68
Mary Orsborn Beseda '74 President	Sylvie Anne Moore '65 Tony Negri, Friend Treasurer
Don Cambou '64 Newsletter Editor	Mark Noonan '70 Carol Laabs Patterson '55 * Doug Pavese '58
Kristine Erken, Friend	* Donna Dennes Doyle '67
Paulette Guaspari Gomes '68	Nadine Wiggins Smedshammer '59
Rhonda Rehm Loop '73	Christine Romani Tonelli '88
JoAnn Hembree MacDonald '56 Corresponding Secretary	Ilona Mayer Williams '64
Joanne Ratzlaff McLaughlin '74 Secretary	Chris Zeek '68 Vice President
Brian Mecchi '77	* Founding Director

But the \$100,000 stays in the Endowment, and keeps generating earnings in perpetuity.

Endowment monies can be “restricted” or “unrestricted.” “Restricted” earnings” MUST go to a specified project. For example, earnings from a restricted music scholarship must go for a music scholarship. “Unrestricted earnings” can be spent on any school related grant the Foundation deems appropriate.

Money slowly started rolling into the Endowment, mostly in the form of restricted Memorial Scholarships. (Read about two of the Foundation’s newest Memorial Scholarships on p. 4). But at the same time, the Foundation was producing unrestricted, “pass through” money every year separate from outside the Endowment, mainly through fundraisers like the hugely successful Polenta Feeds (started 1995), Crab Feeds (started 2010, ended 2014), and Golf Tournaments (started in 1995, ended in 2019). By the year 2000, the Foundation was giving \$50,000 a year to the school to benefit its students. The Panther Project Fund met monthly to evaluate and fund teacher and coaches’ grant requests.

By 2012, the Endowment Fund had reached over three quarters of a million dollars, helped by the unrestricted monies of the Auditorium Seat Plaque Fund established in 2001 – over \$88,000 to date, and the unrestricted monies of the One Thousand Panther Fund established in 2010 – goal: a thousand Panthers, each donating a thousand dollars. Then something truly extraordinary happened to the Endowment Fund. James Fleck, a 1946 SRHS grad, and his wife left the Endowment over \$2,000,000 to create a scholarship fund in their name. Board member Nadine Smedshammer, head of the Foundation’s Scholarship Committee, suddenly had over 20 Fleck Scholarships a year to distribute in addition to the nearly 20 smaller Memorial Scholarships already in the Endowment Fund. She came up with a fair system of allocating the Fleck scholarships, in accordance with the directions in the Fleck Trust. Pavese and Grace helped her fine tune the system. The Foundation grew in organization and sophistication to meet the challenge of handling a huge, unexpected donation.

And the Endowment donations kept coming. 2018 saw another huge donation -- \$879,000 from the Holler Trust (Lucy Giolitti, ’38) to be spent for school needs with the Principal’s guidance. And recently the Gary Rasche Trust (Gary Rasche ’61) left \$1,000,000 to the Endowment for wood, auto and metal shop improvements and scholarships. The Annual Donor Campaign raises around \$35,000 in unrestricted donations a year for the Endowment. As we go to print, the Foundation’s Endowment is well over \$5,000,000. And Pavese is excited to know that a growing number of families have included the Foundation in wills or Trusts by initiating restricted scholarships or programs.

The Foundation’s financial success has been a boon to other area schools, as well. The SRHS Foundation, the oldest and strongest foundation, has freely shared its by-laws and structural organization with Montgomery, Piner, Elsie Allen, and El Molino high schools. Pavese, Mike Daniels ’59, and Grace have met with the boards of other schools in consulting capacities. Pavese even consulted with a high school in Southern California.

While a \$5,000,000 endowment is enormous for a public high school, the Foundation still works diligently to raise more funds. The reasons are simple. Each year, spendable earnings represent only about 3 to 5% of the \$5,000,000 -- \$150,000 to \$250,000. And most of that money goes towards restricted scholarships or projects. Much of the burden falls to fundraisers like the Polenta Feed and this year’s Covid inspired on-line raffle to raise the “pass through” money needed to meet current student and teacher needs.

Still, taken as a whole, the Foundation’s financial successes are stellar. Since its humble beginnings 32 years ago, the Foundation and its strong working board has distributed over \$3,250,000 to the students and faculty of SRHS in the forms of direct grants and scholarships. Hopefully, every Foundation member, and every individual or local business donor, will take pride in that accomplishment. As to the future, the sky’s the limit.

For more information about contributing to the Foundation, contact Doug Pavese at 707-538-3167 or write us at donations@srhsf.org.

CORRECTION: In our Donor Recognition newsletter, we listed a scholarship as the **Bette** Gong Memorial Business Scholarship. The correct name is the **Betty** Gong Memorial Business Scholarship

AN INSPIRING SCHOLARSHIP

Cristian Valencia Figueroa, SRHS 2016, was a charming and loving young man, filled with humility and humor. He would spend nights helping at his grandfather's home, because the older man had cancer. He protected younger kids from bullies. He played soccer and basketball on SRHS teams. He went to SRJC, then worked construction. Cristian had many close friends.

Cristian also loved motorcycles. He was a safe driver, and wore his helmet. But on August 19, 2020, he and his girlfriend, Jackie Barbosa, were struck by a Chevrolet Suburban. Cristian died within minutes, Jackie survived with multiple injuries.

His funeral was large. Over 100 of his close friends attended. After the funeral, his aunt Janet Figueroa, former SRHS assistant principal Monica Baldenegro, Veronica Botello, and Alma Magallon talked about ways to honor him. They decided on a perpetual SRHS Foundation managed scholarship. But the minimum amount to set up such a scholarship is \$10,000. And Cristian's community members didn't have a lot of discretionary funds. The four women were undaunted. While they lacked big donors, they knew they had many small donors. They set up a Facebook page, which quickly expanded to Instagram and Snapchat. On it, they posted many ways to help. Jackie, Cristian's girlfriend, created all the flyers.

The group established a virtual "CVF 5K" run/walk with a \$50 registration fee. It raised over \$5,600. A gift basket raffle raised over \$2,000. City Council member Eddie Alvarez purchased Discount Pizza Cards from Mountain Mike's Pizza. He donated them to the group and they raised another \$1,000 through sales. One of Cristian's friends, Jairo Villalobos, gave haircuts all day and raised \$370. Janet Figueroa's tee

shirts raised over \$500. The list of small events and donations goes on and on. By late fall of 2020, the CVF Scholarship fund stood at over \$11,000 – more than enough to create a SRHS Foundation managed scholarship.

This spring, the CVF Scholarship will award the first of its perpetual scholarships to a senior from the SRHS boys soccer and/or basketball team whose love for the game is an inspiration to his team. The student should enroll in a post-secondary school program.



Cristian Valencia Figueroa

game fundraiser every April 18, Cristian's birthday. With every additional dollar raised, the amount of the yearly scholarship will increase – in perpetuity. Long live the memory of Cristian Valencia Figueroa.

If you would like to donate to the Cristian Valencia Figueroa Scholarship fund, call 707-206-1840. For more information about Cristian, you can contact the CVF Scholarship Committee at scholarship4cristian@gmail.com.

A NEW SCHOLARSHIP FROM A BELOVED TEACHER



Patrick Gallagher

Patrick Gallagher was a talented artist and an excellent teacher. He taught art in the Santa Rosa City School system for 35 years. He also taught at Sonoma State University and Santa Rosa Junior College. He was a founding member of the ArtQuest program at Santa Rosa High School, and earned his place on the school's Wall of Fame. He was well known for his paintings of houses and historical buildings in Santa Rosa and Eureka. He was also well known for his sense of humor, and his many cocktail and dinner

parties. But most especially he was known for his generosity and his desire to help others succeed.

Patrick died of natural causes at the age of 82 on October 20, 2020. But his love of art will live on through the scholarship he bequeathed to the SRHS Foundation. The \$35,000 Patrick Gallagher ArtQuest Scholarship Fund will be managed by the Foundation and will award scholarships in perpetuity through its Foundation invested earnings. The scholarships will be directed to graduating students from the SRHS ArtQuest program who pursue post high school education in the visual arts. We thank you, Patrick, for this important gift, and for your years of service to Santa Rosa students.

REMEMBER WHEN: 1964

Note: Rick Blaine, SRHS's longest attending student, reports on yet another pivotal year. Don Cambou, Editor

By Rick Blaine

For Baby Boomer '64 grads at SRHS, our senior year started with a shocking warning that the world "out there" wasn't as stable as we had assumed. Our charismatic young President, John F. Kennedy was gunned down in Dallas on November 22, 1963. I found out in Study Hall. Principal Duey wisely sent messengers to each class to deliver the news, rather than announce it over the PA system. Still, the news didn't keep us from Bailey Field every Friday night in autumn to watch our Panther football team. It wasn't a stellar season, but when it counted, we won the Big Game handily against our crosstown rival, Montgomery. That victory was a little bit sweeter, since we had to spend the previous school year on the Montgomery campus (split sessions), while our own campus was being repaired and refurbished. But now we were seniors, back on our SRHS, in charge of our own Senior Steps.

We elected our Student Body Officers for autumn semester. The election was mostly pretty predictable – hint: it helped to be a jock. But the Songleader competition turned out to be a really tight race between two excellent teams. Not so with the Cheerleaders. Breaking tradition, a group of gymnasts calling themselves The Boys won that one easily with their acrobatic routine.

We had plenty of formal dances, the first being the Queen's Ball, followed quickly by the Christmas Dance. Winter was the season of the Flea Circus – the affectionate name given to our Varsity basketball team. I believe no one was taller than 6'1". But the Fleas had an 18 and 9 season, even taking second place at the Gridley Invitational Tournament. As an extra treat, our 50 strong, precision girl's drill team, the Pantherettes, performed at every home game half time. Winter also brought us an invigorating dose of international music. The album "Meet the Beatles!" hit the U.S. on January 20. And the Fab Four were on Ed Sullivan's show on February 9. No one missed it.

SRHS made plenty of music on its own. We had our own Student Orchestra, Concert Band, Acappella Choir, Girls' Glee, Boys' Collegianaires, and of course, Pep Band. The Drama Club was strong, too. I remember its creepy performance of the classic thriller, *The Monkey's Paw*.

Springtime brought surf mania to SRHS. Our class pioneers surfed from Bolinas Point, to Salmon Creek, to Point Arena. Many of the rest of us settled for beach parties and body surfing at Stinson Beach – pre Great White Shark, of course. Skateboards were everywhere, even if we had to make our own out of scrap lumber and old roller skates. Little did we know that we were at the vanguard of an international phenomena that is today stronger than ever. The Beach Boys gave us a new soundtrack. They warned, "Don't stick your buddies in the trunk, 'Cause they might get caught, At the Drive In." We did it anyway. The Village and the Star-View drive ins were our weekend nights' homes away from home. That is, when we weren't busy tooling 4th Street and circling the Courthouse. If we got hungry, there was always 31 Flavors, Rogers (best fries in town), and Roma's (a must visit after football games.)

For unknown reasons, we loved miniature golf and elephant jokes. (Why did the elephant quit the circus? He was tired of working for peanuts.) Equally obscure was a girl's penchant for wrapping her boyfriend's class ring with angora wool when "going steady."

As the school year neared a close, Senior Vocation Day had long since morphed into Senior Character day. Judging from the costumes, the dress up event no longer had much to do with vocations – a motorcycle gang, a pair of shoes, a bunch of devils with pitchforks selling indulgences.

On the national stage, May also saw the first major student anti-war demonstrations, with New York and San Francisco leading the way.

We capped the year off with the Senior Cruise and the Prom. School buses took us to and from San Francisco's Fisherman's Wharf and our bay cruise boat. Even in the fog, the night was magical. The Prom was less controlled. At the conclusion of the big dance we headed out for all night after prom parties. Was there drinking? Yes. Were there dangers? Yes. Months later, one of our classmates died in an auto wreck after drinking and driving from a similar party.

On the path ahead was a massive escalation of the Vietnam War, anti-war and racial equality protests, the San Francisco Sound, hippies, drugs, and more assassinations.

The world started changing in our '64 senior year. And even at good ole, dependable Santa Rosa High, so did we.

SANTA ROSA HIGH IN THE BEGINNING

By Mike Daniels



Photo from 1933 yearbook.
Notice the open fields surrounding buildings.

Introduction

The Mendocino Avenue campus of SRHS has graced the street for 96 years, but its location resulted only after a tussle about the site. Naysayers declared it to be too far from town. Today SRHS is considered practically an inner-city school. Designed by the Weeks architectural firm and William Herbert (Santa Rosa's first licensed architect), the campus initially was composed of five buildings and was intended to house the city's students until the year 2000. Estimated at \$375,000, the final construction cost totaled a half-million dollars

The Main Building

Opened in a city-wide celebration in December 1924, the Main Building held its first classes in January of the next year. The classically designed structure was built of brick partly in response to the 1921 fire that destroyed the wood classroom building on Humboldt Street. This new building had room for all academic disciplines as well as some enrichment classes. By the mid-30s, growth in enrollment justified a new classroom building. It was slated to be built south of the auditorium but the financial restraints of the Depression prohibited it.



From behind, The Main Building and Auditorium. 1929



The Main Entrance still retains its grandeur.

Photo by Mike Grace



The Main Building today. Photo by Mike Grace



A packed house. 1959



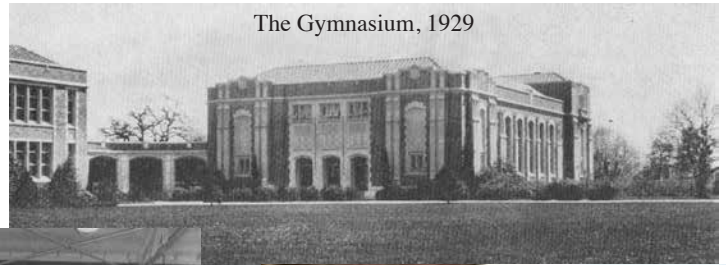
The Auditorium Entrance Today
Photo by Mike Grace

The Auditorium

Finished in the spring of 1925, the Auditorium at the time was the largest such structure between San Francisco and Oregon. Countless assemblies, rallies, vocal, instrumental and dramatic performances have been staged there. Perhaps among the most noteworthy was the 1949 production of "Life with Father" that featured the wardrobe used in the Hollywood film version. Drama instructor Glen Guymon relied on his filmdom connections for the wardrobe. The drama was held over for eight weeks it was so popular in the larger community. Guymon also regularly brought celebrities to the stage during the 1950s. The list includes Sammy Davis Jr, Eartha Kitt and the cast of New Faces of 1952 and others.

The Gymnasium

Known today as the North Gym, it was finished in 1929 as the third of the original campus buildings. Known familiarly as “the crackerbox,” the gym’s bleachers sat 1,000 and rose on both sides above the basketball court. In the first game played on that court SRHS lost to Piedmont High of the Easy Bay by 25-14. The gym was used by both sexes, the boys dressing room was in a basement under the east bleachers and the girls’ facilities were at the north end of the building. It was used for intramural games and physical education classes. Classrooms were built above the south entrance and were entered through a walkway from the second story of the main building.



The Gymnasium, 1929



Four confining walls explain the name “the crackerbox.” 1940



92 years after construction, the North Gym and Auditorium are still faithfully guarded by gargoyles. Photo by Don Cambou



The Music Building today. Photo by Mike Grace



The Dance Room, 1959

The Music Building

The Sara Pryor Music Building, completed in January 1935, is named for a long-time secretary of the board of education. It was constructed in two phases, the second added a springboard floor for dance classes and a room with risers and a small stage for vocal classes. Lockers and instrumental practice rooms were also added. Instrumental classes were held in the large room on the western edge of the building.

The Shops

The vocational shop area was the last original building to be constructed. It opened in 1935 with \$20,000 worth of navy surplus equipment. Continuing the architectural design and use of brick, it provided instruction and practice in wood, metal, electricity and auto mechanics. Longtime wood shop instructor Bill Larkin regularly produced students who designed and built wood crafts that seemed always to receive blue ribbons at the County Fair. A great number of his students enjoyed successful careers in cabinetry and home construction.



Inside the Wood Shop. Photo Don Cambou



The Wood and Metal shops are now receiving much needed upgrades. Photo Don Cambou

Afterword

The original buildings have undergone remodeling through the years, new buildings have appeared and some plans were aborted. Among the new buildings are the Agriculture Hall, Science and Library building, snack building, temporary buildings and DeSoto Hall. Those never built include the south-of-the auditorium classrooms, an observatory and a life-size statue of a panther.

CONTRIBUTIONS & MEMBERSHIP NEWS

WINTER 2021

By Rose Machen Moeller '68 & Paulette Guaspari Gomes '68

The Foundation welcomes 85 new members, 45 renewals, current membership 970.
We gratefully thank our members and non members for donations totaling \$6,165.

The following members and friends contributed additional funds over and above their membership fees:

Don Cambou '64
Chet Galeazzi '41
Ruth Taylor Hauschildt '58
Donna Acuff Mazzucchi '55
Darlene Mc Cullough Bath '56

Dorothy Cameron Mercer '57
Lucille Elliott Moholt-Siebert '68
Gwen Nicholson Neary '65
Cynthia Spalding Norman '57
Thelma Wallace Ramsey '43

Gwen Rigby '64
Sandra Lee Husby Spencer '54
Darell Steele '61
Clarence Tauzer '44

ORGANIZATION DONATIONS

Blackbaud Giving Fund
United Way

MEMORIAL & SPECIAL CONTRIBUTIONS

You may send the SRHSF a contribution in the name of a deceased Panther, or in the name of a specific living person, department, group need, or scholarship fund.

AG DEPT/MEMORY BOB GOBBI

Cathy Krause Gobbi '55

RUTH RAPP ANDERSON '52

Doralyn Fisher Wicklund '52

ART DEPT/MEMORY PATRICK

GALLAGHER & PEG LONGMAN –

RETIRED STAFF

John Williams '55

BASEBALL PROGRAM

Scott Beseda '72

Robert Brown '64

RUBEN BESEDA – RETIRED STAFF

Todd '73/Mary Orsborn '74 Beseda

JERRY BELL '66 - TWIN BROTHER

M Candace Bell '66

TIM CALEGARI

Dorothy Gordon Calegari '64

DOUGLAS CAMPBELL –

JOURNALISM TEACHER

Janet Mosure Tompkins

JESSIE/MARSHA CARNEY

SCHOLARSHIP FUND

Avis Claeys – Friend

KIMBI COUZENS LAWSON '75

Todd '73/ Mary Orsborn '74 Beseda

JACK DE MEO '51

Judy Revard De Meo '52

ENGLISH DEPT

Donald/Madeline Getts – Parents

RON FERTITTA '52

Gary Vice '58

ELISE DALE FONG '85

Doug Pavese '58

IN HONOR: MR JAMES HISS 1970'S

TEACHER

Lynette Williamson Wong '77

ART IBLETO-FUNDRAISER/SUPER

CHEF

Ballo Family – Parents

MYLO IMSDAHL '60

Steve Olson '60

BETTYE KERBY LUND '74

Todd '73/Mary Orsborn '74 Beseda

HUNTER MC KEEVER '74

Todd '73/Mary Orsborn '74 Beseda

MUSIC DEPT

Anthony Martin

GARY EUGENE NOONAN '55

Stephen '60/ Elaine Olson

BOB NORMAN '52

Jack Guenza '52

JOAN SCHWEDHELM OLSON '52

Doralyn Fisher Wicklund '52

ARLENE HARELAND PETERSEN '60

Ernie/ Charlene Ohlson -Friends

JUDY BROWNE PODSTATA '52

Doralyn Fisher Wicklund '52

PEANUT BUTTER & JELLY CLUB

Jo Ann Hembree Mac Donald '56

SRHS FAMILIES

Victor '65/ Karen Trione

THOMAS M TOMASI '42

Anita Migliavacca Tomasi '47

CANDY CALL VENGE '63

Rick Call '67

PATRICIA PRICKETT WALDOW '53

Doralyn Fisher Wicklund '52

BERTA WIGGINS SCHOLARSHIP

FUND

Oren/Nadine Wiggins '59 Smedshammer

Bill Wiggins – Trans Tech Consultants

David Wiggins – Lux Metals, Inc.

Floyd/ Julie Schulte Wiggins '55

BOBBY YATES '61

Janice Yates - Friend

HAVE YOU INCLUDED THE FOUNDATION IN YOUR ESTATE PLAN?

In Memoriam

Patrick Gallagher	faculty	Gary Noonan	1955
Richard Starr	faculty	Rodney Griggs	1956
Josephine King Robfogel	1941	Barbara Braily Poncia	1959
Gino Canevari	1942	William Kane III	1961
Frances (Frank) Keegan	1942	Kathy Kirkpatrick Simmons	1967
Vivian Sorensen Keegan	1943	Marshall McKay	1970
William Sawyer	1944	Hunter McKeever	1974
Ronald Fertitta	1952	Elise Dale Fong	1985
Rose Mary Rasmussen Williams	1952	Bradley Cowen	1990
Clyde Wiggins	1952	Tara Wood Mendez	1990
Gene Luttrell	1954	Geoffrey Wright	2007
Rita Elgin Carrillo	1955	Ashley Meyer	2011

LETTERS

For a year now, SRHS teachers and counselors have had to work from home. They've made classrooms and offices in bedrooms and dens. The teachers have had to create their own Zoom studios. Recently the Panther Project Fund granted each of those 92 individuals \$100 Amazon Gift cards to help cover unanticipated expenses. Below are just a few of their many letters of thanks.

Dear Foundation:

Thank you for the Amazon gift card! This made a difference for me – I was able to purchase an electronic tool that I can use with Zoom to give “notes” to students for examples, clarifications, etc. – it helps so much with trying to deliver instruction virtually!

I am appreciative!

Connie Rice, Science Department

Hi SRHS Foundation,

Thank you so much for your GENEROUS gift. As a first year teacher, the community and support at Santa Rosa High have truly left me speechless. Thank you for your support and generosity during this time.

Alex Marsh, Earth Science Department

Dear SRHS Foundation,

Thank you so much for your thoughtful, supportive, and generous gift of a \$100 Amazon gift card! I could really use it since I recently purchased a new laptop for distance learning! SRHS staff and students are so fortunate to have support! I plan on purchasing some books for my classroom!

Much love and respect,

Megan Whyte, English Department

Dear SRHS Foundation,

I wanted to thank you for the gift card and your ongoing support of the students and staff of SRHS. Having been a counselor at SRHS since 2003, I have seen first hand all of the wonderful ways the foundation has helped SRHS remain the best high school around!

Stay safe and healthy and I look forward to when I can see many of you at the Polenta Feed and Scholarship distribution events.

Warm Regards,

Seth Geffner, Counselor

Santa Rosa High School



- ONE THOUSAND PANTHERS -



Thank you for your generous donations!
We look forward to your involvement with the SRHS Foundation

Giving Matters

Donations fiscal year 2020/2021 to Date

Gail Rocco Dutton***	Bill 1964 and Diane Tillmannshofer 1962 Zoller
Gail Rocco Dutton: In memory of Katherine Miller Weber 1962	Larry Weese 1964 *****
Jackie Yates Irene 1958: In memory of Bobby Yates 1961	Bill 1969 and Cynthia Porter 1970 Gallaher ***
Roy Kunz 1956	Dorothy Gordon Calegari 1964
Kathy Lazzini: In memory of Raymond Lazzini 1948	A. James Robertson 1955
Alana Kelly 1978 *****	Pamela Alves Lorenz 1967: In memory of George Harold Alves 1941
Robert Borges 1978 *****	Charles J Beck 1964: In memory of Harry and Trudy Beck
Ward 1958 and Pat Townsend 1959 Thompson #**	Dennis Peterson 1957: In memory of Arlene Hareland Peterson
Candace Pintane Jones 1970 **	Jim and Kim McKee 1977
Margaux Hardy 1985	Mary Mailer Rigney 1961: In memory of J. Clark Mailer
Dave and Michelle Welch Head 1972	Charlotte Gale Unciano 1965
Tom Schmidt 1964	Bruce and Debra Burton
Art Gambini 1968, Andi and Kevin Gambini 2001	Todd 1973 and Mary 1974 Beseda #*
In memory of Rae Gambini 1937	Dr. Celestino Fernandez 1968
Bill and Suzie Freidman 1966*****	Mark E. Noonan 1970
<u>Class of 1985</u> : in memory of Elise Dale Fong 1985	Lisa Keller Evich 1985 *
Marlene Adam 1985	Bonnie Panizzera 1963 *
Lis Barea 1985	Mark Trione *****
Linda Green Burns 1985	Bob Dale 1958
Wes and Carol Langford Daniels 1985	Arnold and Dale Martin Buzzard 1961 **
Krista Poulsen Soria 1985	<u>Pandy Pooled Fund</u> :
Leigh-Ann Massa Reinero 1985	Burl Estes 1961
Jennifer Treadway 1985	William Firestone 1964
Joanne Weise Tyler 1986	Robert MacDonald 1945 In memory of Jeanette MacDonald
Kathleen Bargar Viarengo 1986	
Point Person: Hillary Wooton 1985	

Indicates donated a plaque

*Indicates donations! Wow!

A Campaign in progress to enrich the SRHSF Endowment Fund
by utilizing \$1,000 donations by 1000 Panther supporters to reach a goal of \$1 million
Proceeds are allocated to student needs at SRHS through the Panther Project Fund of the SRHS Foundation
The campaign began in 2011 and will continue until the goal is met.

Currently - we have a total of 285 donors (many with multiple donations) OVER \$494,300

JOIN US! We are making a difference.

Call the Pandy Line (707.571-7747) or visit us online at www.SRHSF.org for assistance.

Donations options are by cash, check, credit cards are accepted from individuals and groups (pooled), pledges over 2, 4, and 5 years, employer matching funds, and marketable securities. CALL US!

The Front Sign Plaque Project



Only one plaque left! Your donation of \$5,000 goes into the One Thousand Panthers Endowment Fund.



To grab this remaining plaque, Call the Pandy Line 707 571-7747

Center Pillar

P
A
T
T
E
R

By Pandy
Spring '21

Daria Bishop '85 recently won the Alluring Africa grand prize for her stunning photograph of a nursing baby mountain gorilla. She took the photo in Uganda's Bwindi Impenetrable Forest. Daria's winning image brought her a four night luxury Botswana safari for two, valued up to \$10,000.



Photo by Daria Bishop



Marshall McKay

Marshall McKay '70 lived a full and influential life as a fierce advocate for the environment and protector of Native American cultural resources. He was the chairman of the Yocha Dehe Wintun Nation, owners of the Cache Creek Casino and Resort. He served on many boards, including the Smithsonian National Museum of the American Indian, the chairmanship of the Autry Museum of the American West in Los Angeles, and the U.C. Davis Foundation. Two endowed chairs were created at U.C. Davis under his leadership – one for Native American studies and another for pediatric endocrinology. Rick West, president and chief executive at the Autry, told The LA Times that McKay was “one of the five — maybe even three — significant Native leaders in the late 20th century and early 21st

century period.” McKay died December 29, 2020 due to complications of Covid 19.

Jim Grace '61 taught business and computer classes at Ignacio Valley High. The SRHS basketball star passed on his skills for 30 years as head basketball coach and then as Boys and Girls Athletic Director. The school honored their modest coach by naming their basketball court after him.



Michael Smedshammer

Michael Smedshammer '83 has certainly been the right person in the right place at the right time. The English PhD from the University of New Mexico taught his specialty at Modesto Junior College from 2000 to 2012. Then he became the school's Distance Education Coordinator. When a little bug called Covid 19 came along in 2020, Michael was ready. Over the years, he had provided Zoom and Canvas training to thousands of students, staff, and faculty at MJC. Now he trained hundreds, if not thousands, more. He took phone calls and answered emails day and night. He was an optimistic and reassuring presence. For all that, the school honored him with its Beacon of Hope Faculty of the Year award.

The Covid Pandemic has taken a toll on the many groups of Panther alumni who have been meeting with regularity. The **'59 songleaders**, who live in various parts of the state and even Hawaii, have embraced technology and meet each week via Zoom. Not quite the same, but . . .

“Pandy's Holiday Lights” brought excited smiles to thousands of faces from December 5 through December 19. Nearly two dozen decorated trees, sponsored by SRHS families, organizations, and local businesses, lined the drive in front of the school. They were accompanied by a spectacular light show. The school's **Associated Student Body**, with great help from **Lisa Piehl, Ag Department chairperson**, organized the event. The Press Democrat honored the display as one of its “10 Can't Miss Holiday Light Displays in Sonoma County.”





SRHS FOUNDATION

"Once a Panther, Always a Panther"

P.O. Box 11006

Santa Rosa, CA 95406-1006

Address service requested

Time to renew?

Please check your expiration date above your address to see if it is time for you to renew your membership.

If you have already renewed

THANK YOU!

WAYS TO PARTICIPATE IN THE SANTA ROSA HIGH SCHOOL FOUNDATION

Name (please print)	Maiden Name	Spouse's Name	
Address	City	State	Zip
Home Phone	Cell Phone	Email	
Preferred Method to receive mail & Newsletter:		<input type="checkbox"/> Email	<input type="checkbox"/> U.S. Mail
SRHS Grad Year _____	Spouse SRHS Grad Year _____	<input type="checkbox"/> SRHS Staff	
<input type="checkbox"/> SRHS Friend	<input type="checkbox"/> Parent/Grandparent (circle one): Grad Year of Student(s) _____		



Membership Fee:			
<input type="checkbox"/> \$25 ~ 1 year	<input type="checkbox"/> \$45 ~ 2 years	<input type="checkbox"/> \$60 ~ 3 years	<input type="checkbox"/> \$500 ~ Lifetime
Annual Fund Campaign Contribution:			
Please accept my gift of \$ _____ for:		<input type="checkbox"/> General unrestricted gift	
<input type="checkbox"/> Directed gift for _____ (Department or Program)		<input type="checkbox"/> Gift in honor/memory of _____ (circle one)	
Join One Thousand Panthers:			
<input type="checkbox"/> \$1,000 or more	<input type="checkbox"/> \$500 ~ 2 years	<input type="checkbox"/> \$250 ~ 4 years	<input type="checkbox"/> \$200 ~ 5 years
Please acknowledge this donation in name of: _____			

YOU MAY SEND CHECK (made payable to SRHS Foundation) for GRAND TOTAL OF \$ _____ OR

Charge my: ___ Visa ___ MasterCard ___ Discover Card # _____ Exp. Date _____

3 digit CVV# (on back of card) _____ Name as printed on card: _____ Signature: _____

Please return this form to: Santa Rosa High School Foundation, P.O. Box 11006, Santa Rosa, CA 95406. If you prefer, you may complete your transaction online through our website: www.srhhsf.org. For more information, please call the Pandey Line at (707) 571-SRHS (7747) OR email us at: info@srhhsf.org. Tax ID #68-0195375 (for a gift of Marketable Securities, please contact us for more information.) Remember... **Once A Panther, Always a Panther!**